

Town of Pleasant Valley Property Tax Rate History

Copyright © 2011 *Bill Rubin*

March 16, 2011

This document presents historical property tax rate information for the Town of Pleasant Valley, Dutchess County, New York, in both table and chart form.

Town of Pleasant Valley						
Year of Tax Bill	Taxable Market Value		Tax Levy		Tax Rate	
	Market Value	Percent Increase	Tax Levy	Percent Increase	Tax Rate per \$K of Market Value	Percent Increase
2001	\$510,687,715		\$1,357,766		\$2.66	
2002	\$571,583,906	11.9%	\$1,433,524	5.6%	\$2.51	-5.7%
2003	\$722,531,600	26.4%	\$1,552,514	8.3%	\$2.15	-14.3%
2004	\$761,003,851	5.3%	\$1,633,375	5.2%	\$2.15	-0.1%
2005	\$850,301,691	11.7%	\$1,740,217	6.5%	\$2.05	-4.6%
2006	\$1,010,765,376	18.9%	\$1,711,853	-1.6%	\$1.69	-17.2%
2007	\$1,147,606,302	13.5%	\$1,805,939	5.5%	\$1.57	-7.1%
2008	\$1,216,116,927	6.0%	\$1,958,149	8.4%	\$1.61	2.3%
2009	\$1,218,007,463	0.2%	\$2,048,662	4.6%	\$1.68	4.5%
2010	\$1,127,005,969	-7.5%	\$2,222,180	8.5%	\$1.97	17.2%
2011	\$988,830,331	-12.3%	\$2,422,744	9.0%	\$2.45	24.3%
2012	\$1,068,553,959	8.1%	\$2,471,199	2.0%	\$2.31	-5.6%

The columns of the above table are obtained as follows:

- **Market Value:** Assessed value in Reference 1 divided by the corresponding equalization rate in Reference 2, except for 2012, which is from Reference 3.
- **Tax Levy:** Tax levy in Reference 1, except for 2012, which simply assumes a 2 percent increase from the 2011 value (Cuomo tax cap proposal).
- **Tax Rate:** Corresponding Tax Levy divided by Market Value.
- **Percent Increase:** Calculated from successive year data in previous column.

All quantities are calculated to 16 significant figures. Rounding is only for convenience of the above display.

Charts

The charts on the following 6 pages depict each of the 6 columns of the above table as a function of year of property tax bill.

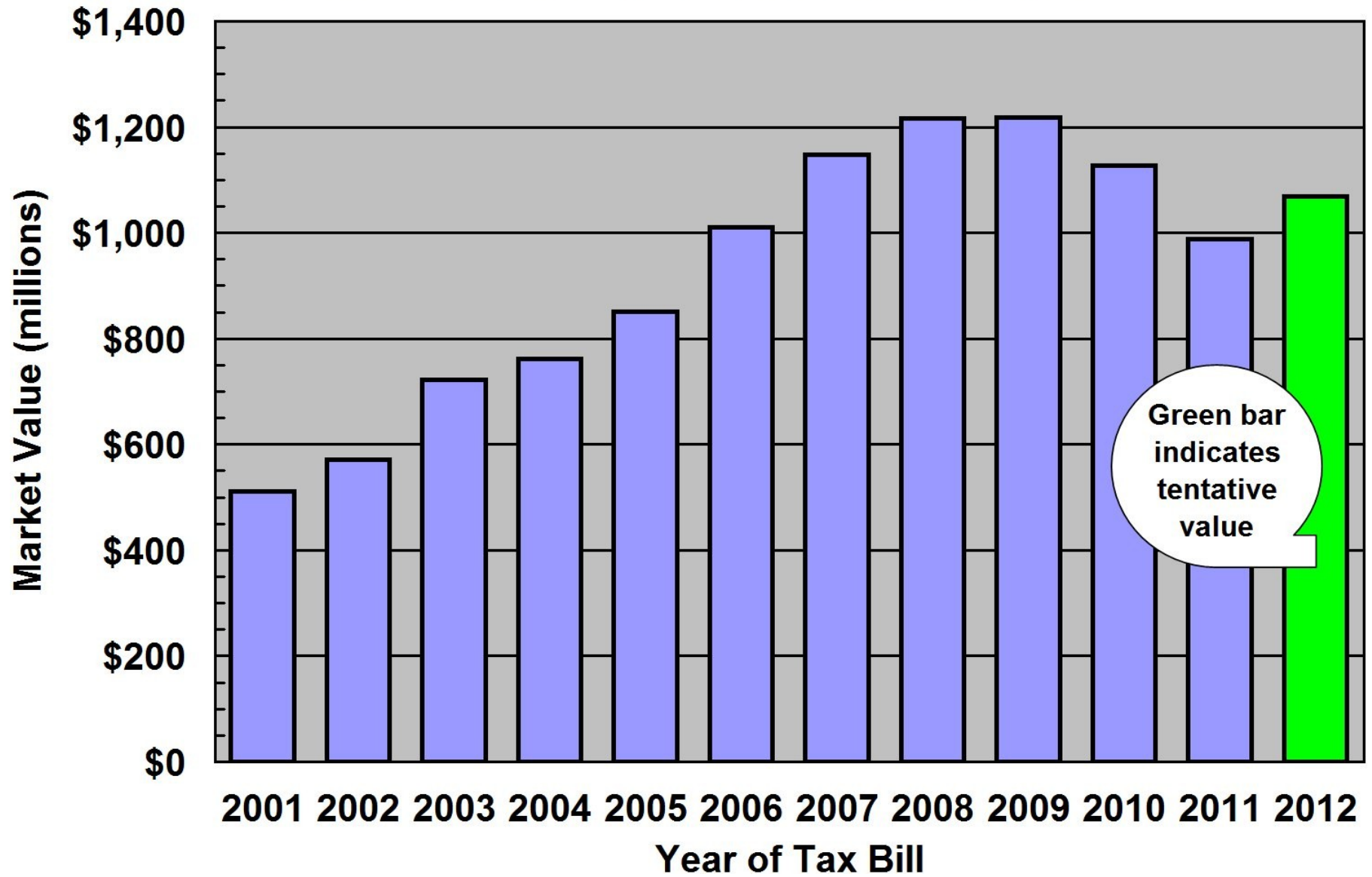
Acknowledgment

The author is grateful to Pleasant Valley Town Assessor Teresa Stegner for graciously providing the Town's tentative taxable assessed value and other helpful information.

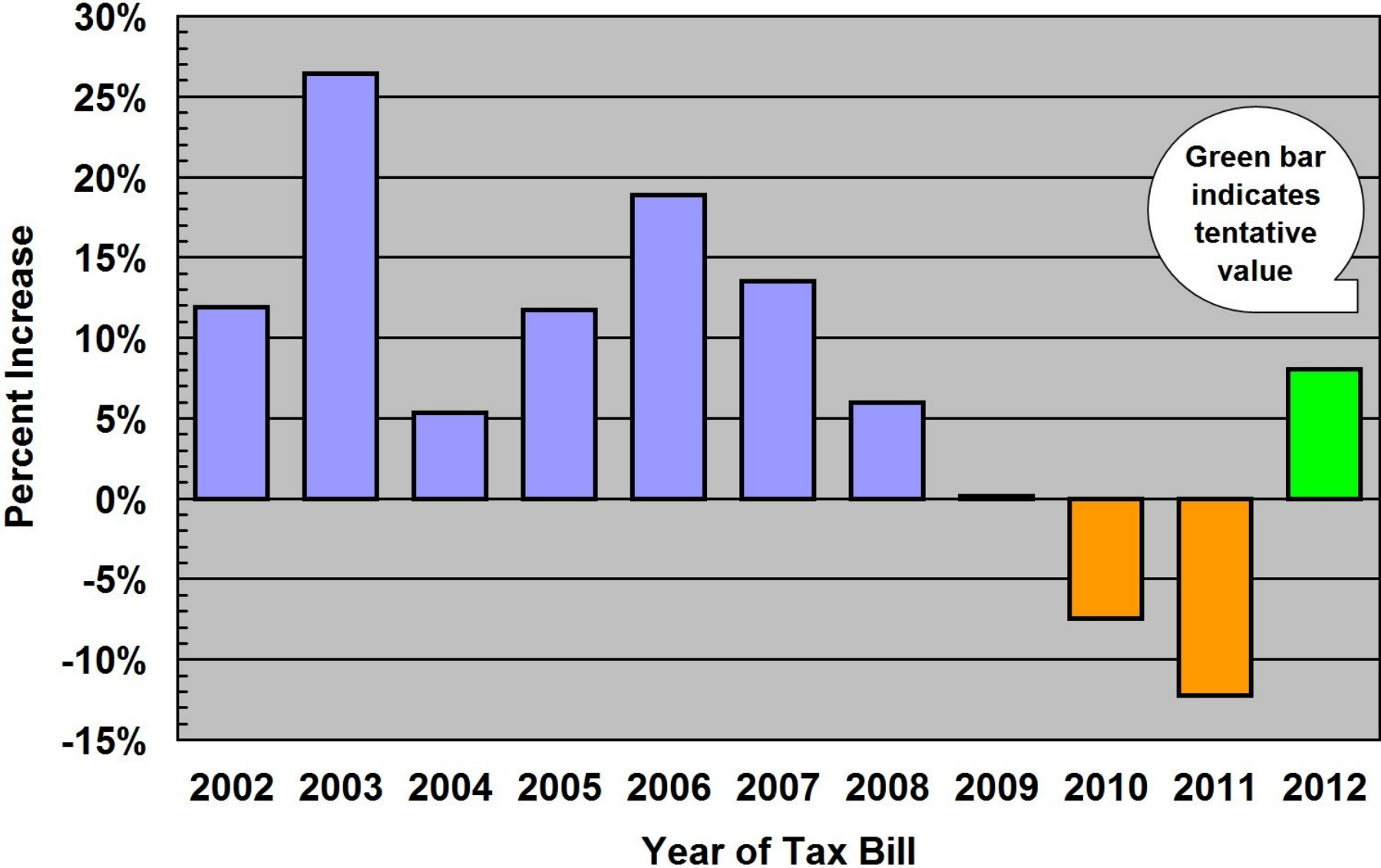
References

- [1] *2001 County, Town School & Village Tax Rates*, pamphlet published by the Dutchess County Real Property Tax Service Agency, 22 Market St., Poughkeepsie, NY 12601, and similar pamphlets for succeeding years up through 2011. These pamphlets are also available at their [website](#).
- [2] [Equalization Rate by County](#), data published on the web by the New York State Department of Taxation and Finance Office of Real Property Tax Services.
- [3] Tentative 2012 taxable market value is courtesy of the Town of Pleasant Valley assessor's office on March 1, 2011. The final 2012 value is expected to be slightly lower.

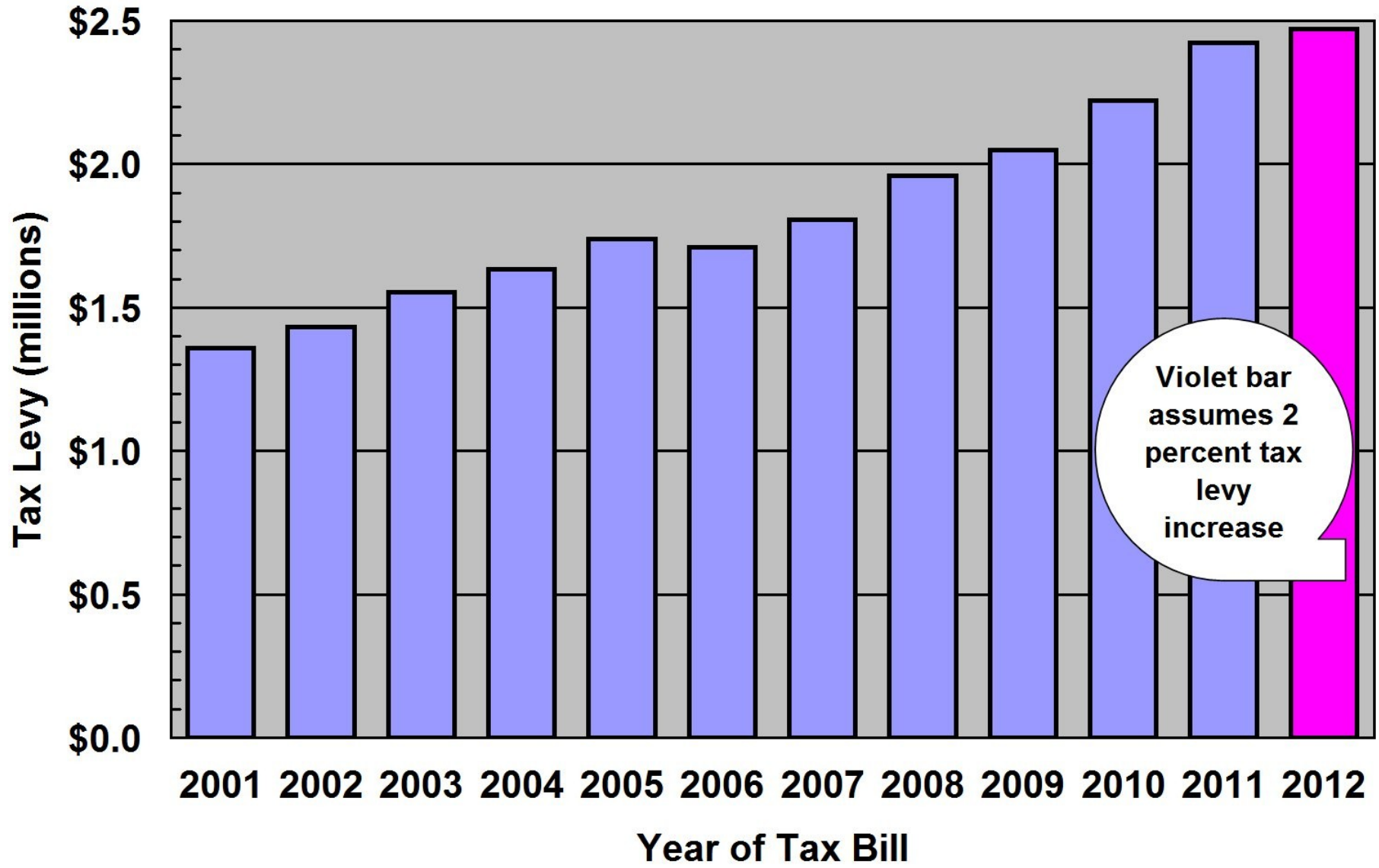
Town of Pleasant Valley Taxable Market Value



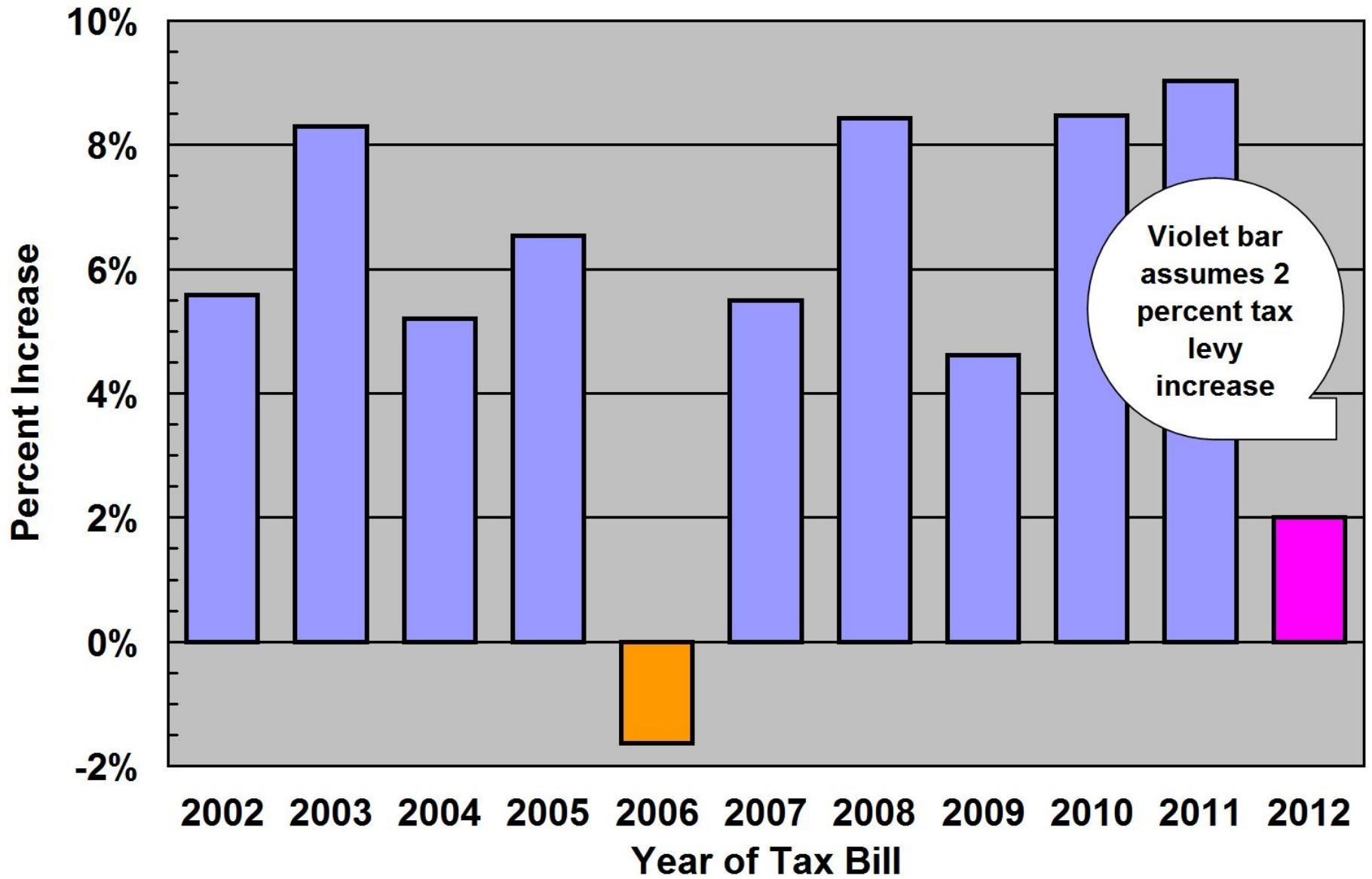
Town of Pleasant Valley Taxable Market Value Increase



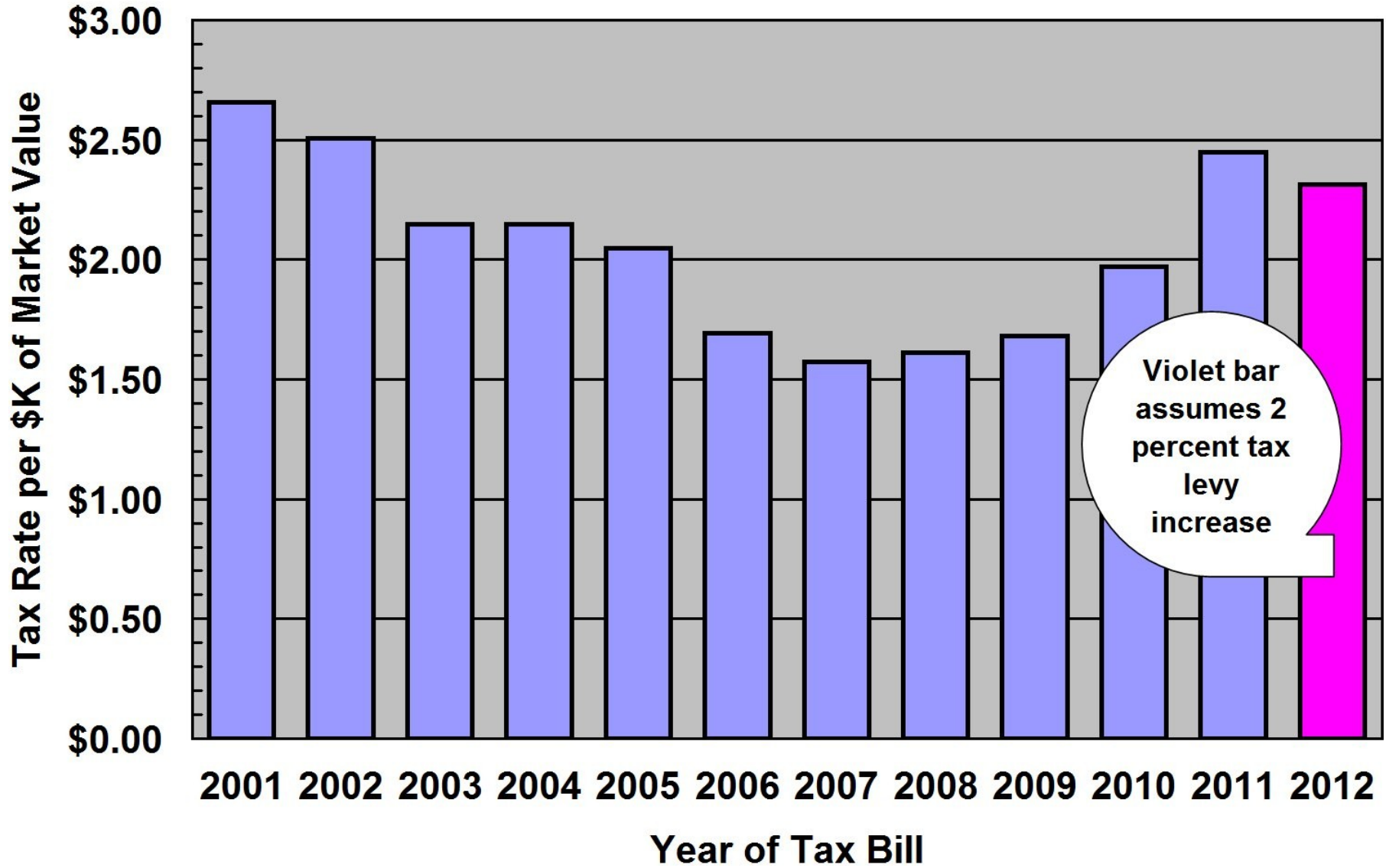
Town of Pleasant Valley Tax Levy



Town of Pleasant Valley Tax Levy Increase



Town of Pleasant Valley Tax Rate



Town of Pleasant Valley Tax Rate Increase

