

Hyde Park School District Tax Data

Copyright © 2012 *Bill Rubin*

October 13, 2012

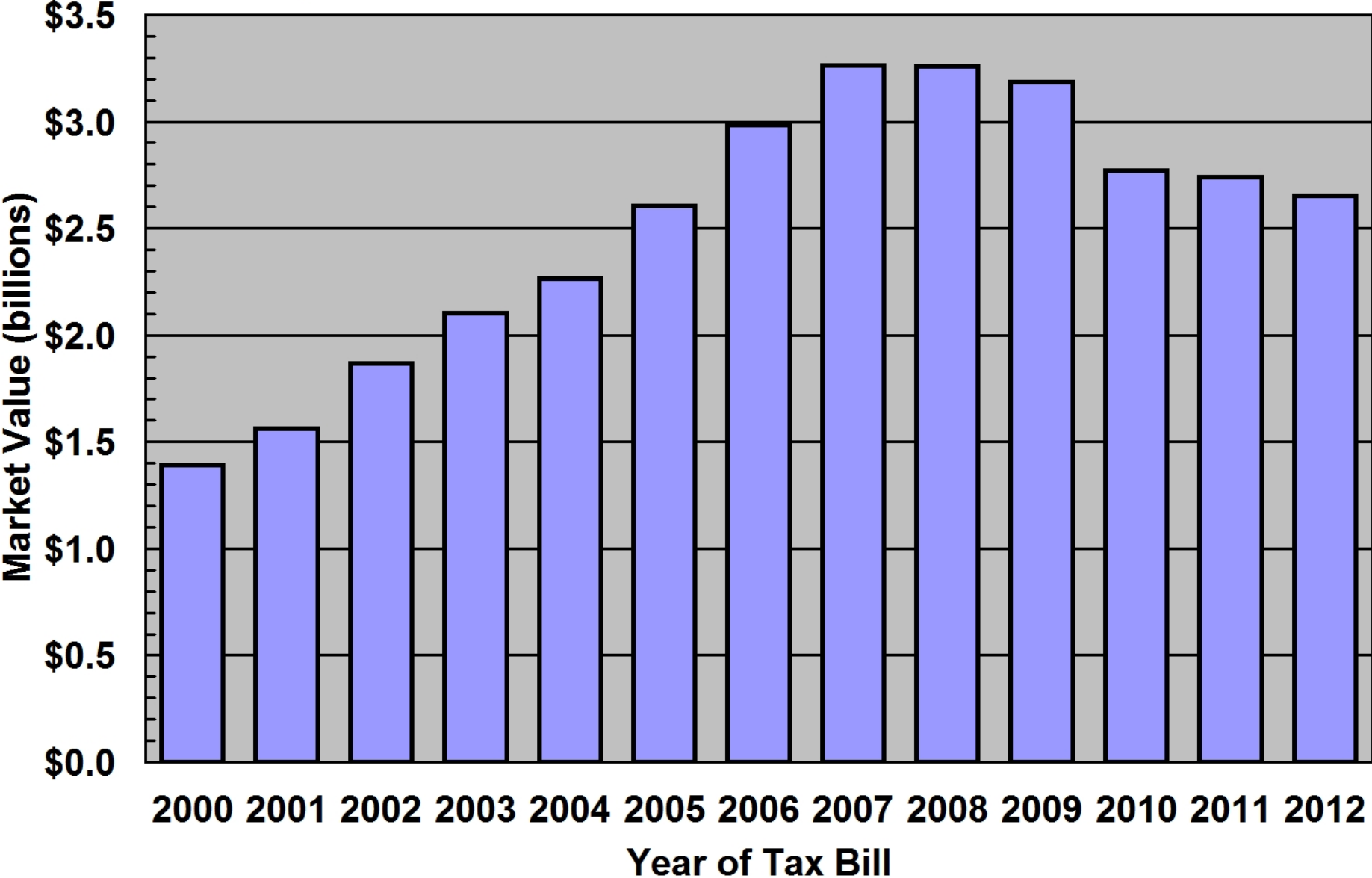
This document displays the taxable market value, tax levy, and true value tax rate for the Hyde Park School District in Dutchess County, New York, for each year since 2000. It also shows the year-to-year changes in each of these parameters. The data in table form:

Hyde Park School District						
Year of Tax Bill	Taxable Market Value		Tax Levy		Tax Rate	
	Market Value	Percent Increase	Tax Levy	Percent Increase	Tax Rate per \$K of Market Value	Percent Increase
2000	\$1,393,091,633		\$27,073,936		\$19.43	
2001	\$1,561,214,944	12.1%	\$29,136,494	7.6%	\$18.66	-4.0%
2002	\$1,866,580,957	19.6%	\$32,045,374	10.0%	\$17.17	-8.0%
2003	\$2,101,706,931	12.6%	\$34,994,115	9.2%	\$16.65	-3.0%
2004	\$2,266,996,900	7.9%	\$39,167,065	11.9%	\$17.28	3.8%
2005	\$2,603,639,453	14.8%	\$42,331,498	8.1%	\$16.26	-5.9%
2006	\$2,987,069,850	14.7%	\$47,129,857	11.3%	\$15.78	-3.0%
2007	\$3,265,870,442	9.3%	\$48,044,664	1.9%	\$14.71	-6.8%
2008	\$3,258,721,700	-0.2%	\$49,114,378	2.2%	\$15.07	2.5%
2009	\$3,187,283,749	-2.2%	\$49,683,421	1.2%	\$15.59	3.4%
2010	\$2,770,033,299	-13.1%	\$51,523,681	3.7%	\$18.60	19.3%
2011	\$2,740,978,637	-1.0%	\$52,791,335	2.5%	\$19.26	3.5%
2012	\$2,655,168,017	-3.1%	\$54,206,294	2.7%	\$20.42	6.0%

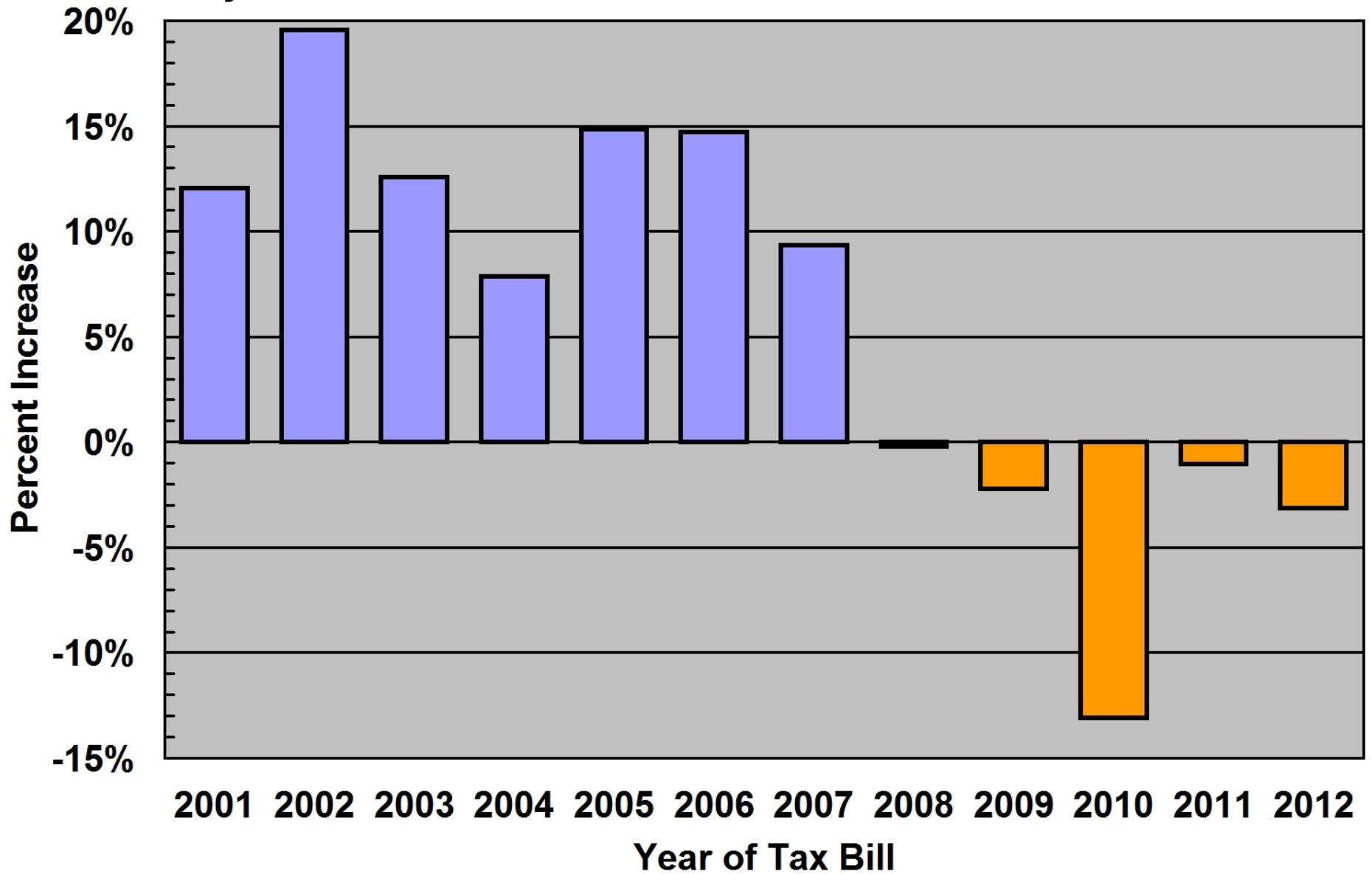
The source of the above data is the yearly [tax rate pamphlets](#) published by the [Dutchess County Real Property Tax Service Agency](#) (RPTSA), except for 2012. The 2012 data is from [Tax Levy Calculations, Rates](#), presented to the Hyde Park School District Board of Education on August 23, 2012. (The 2012 data will not be published by RPTSA until January 2013.)

The following pages chart each of the 6 columns of the above table for easy viewing.

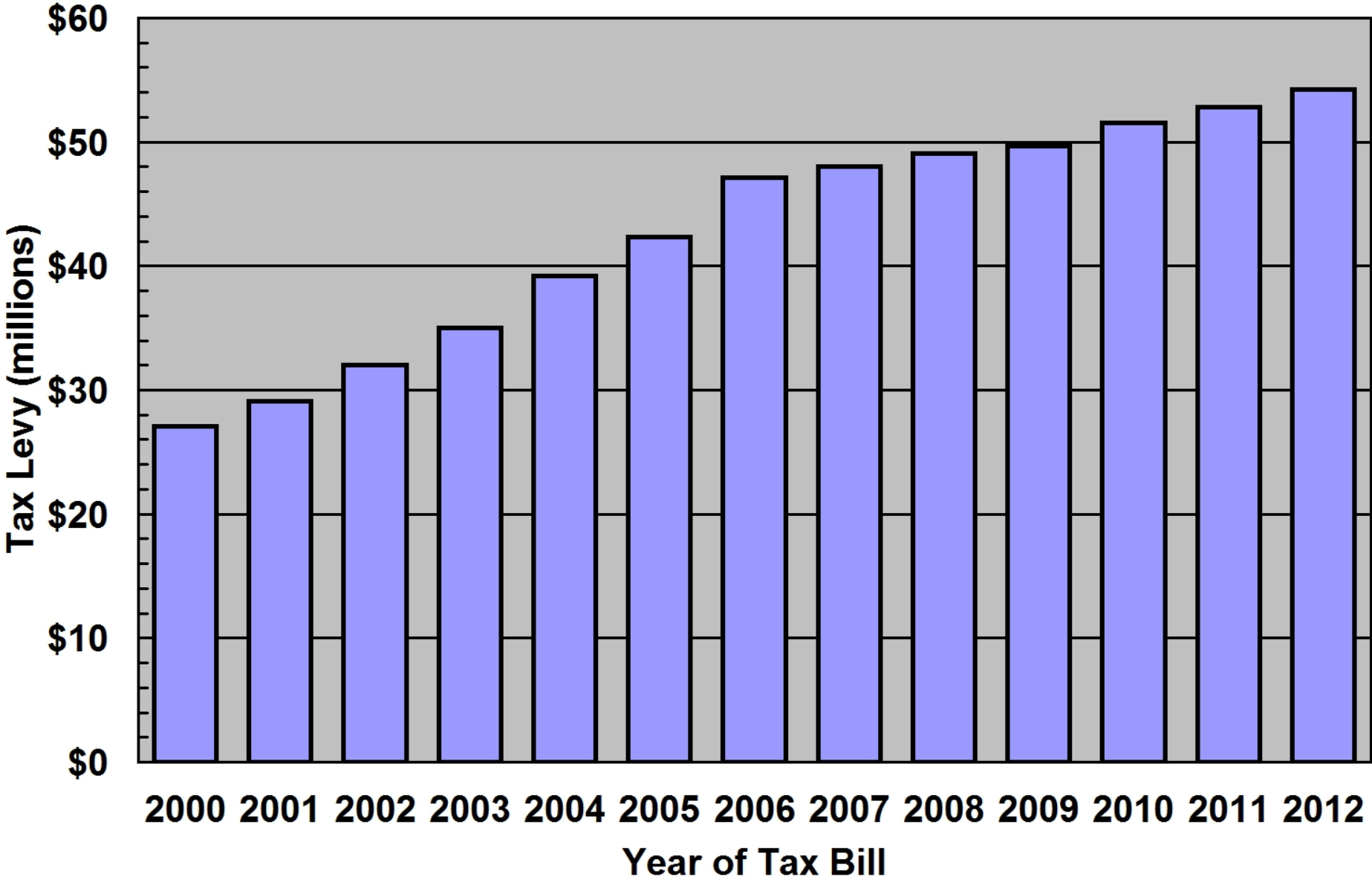
Hyde Park School District Taxable Market Value



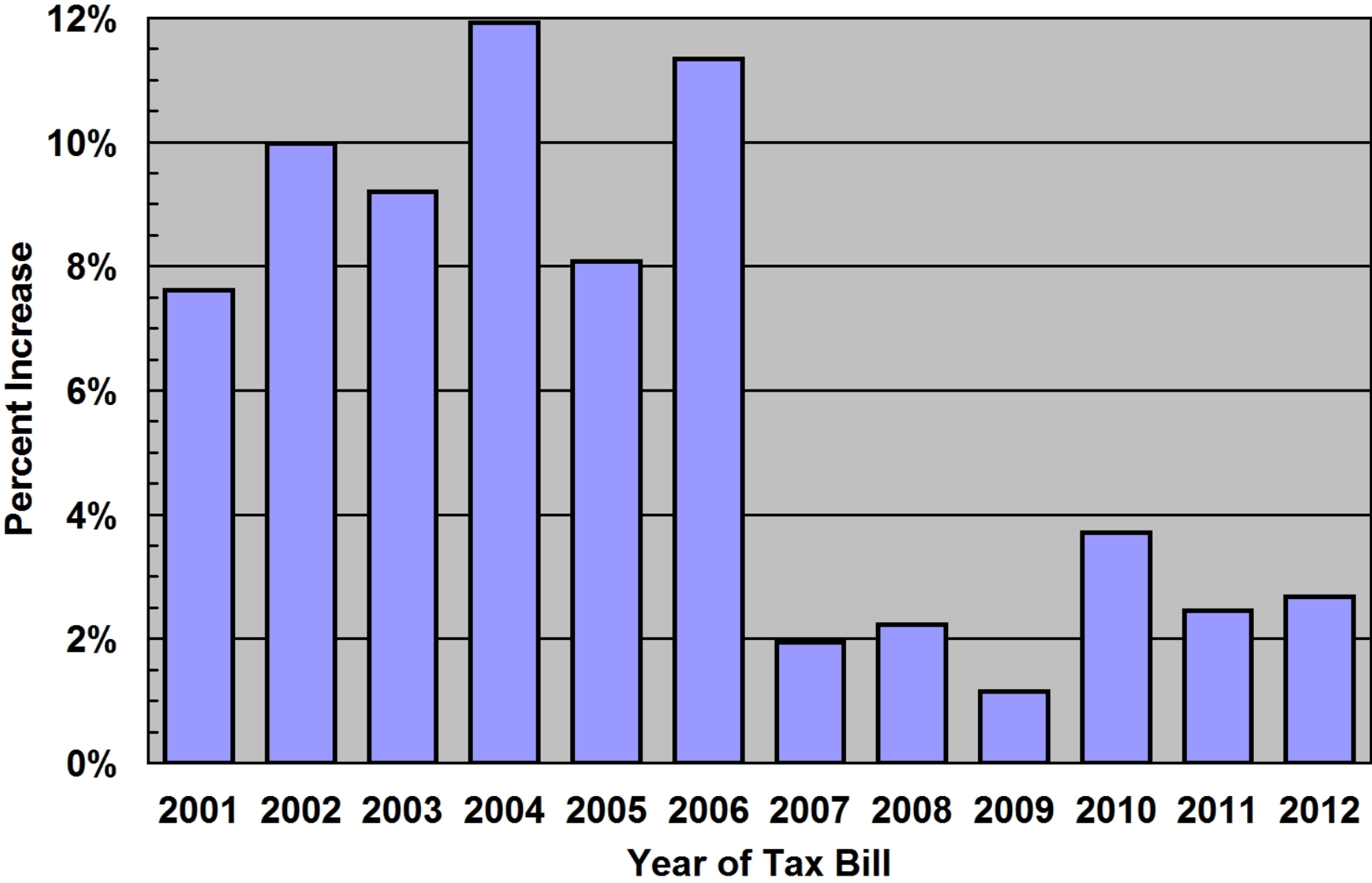
Hyde Park School District Taxable Market Value Increase



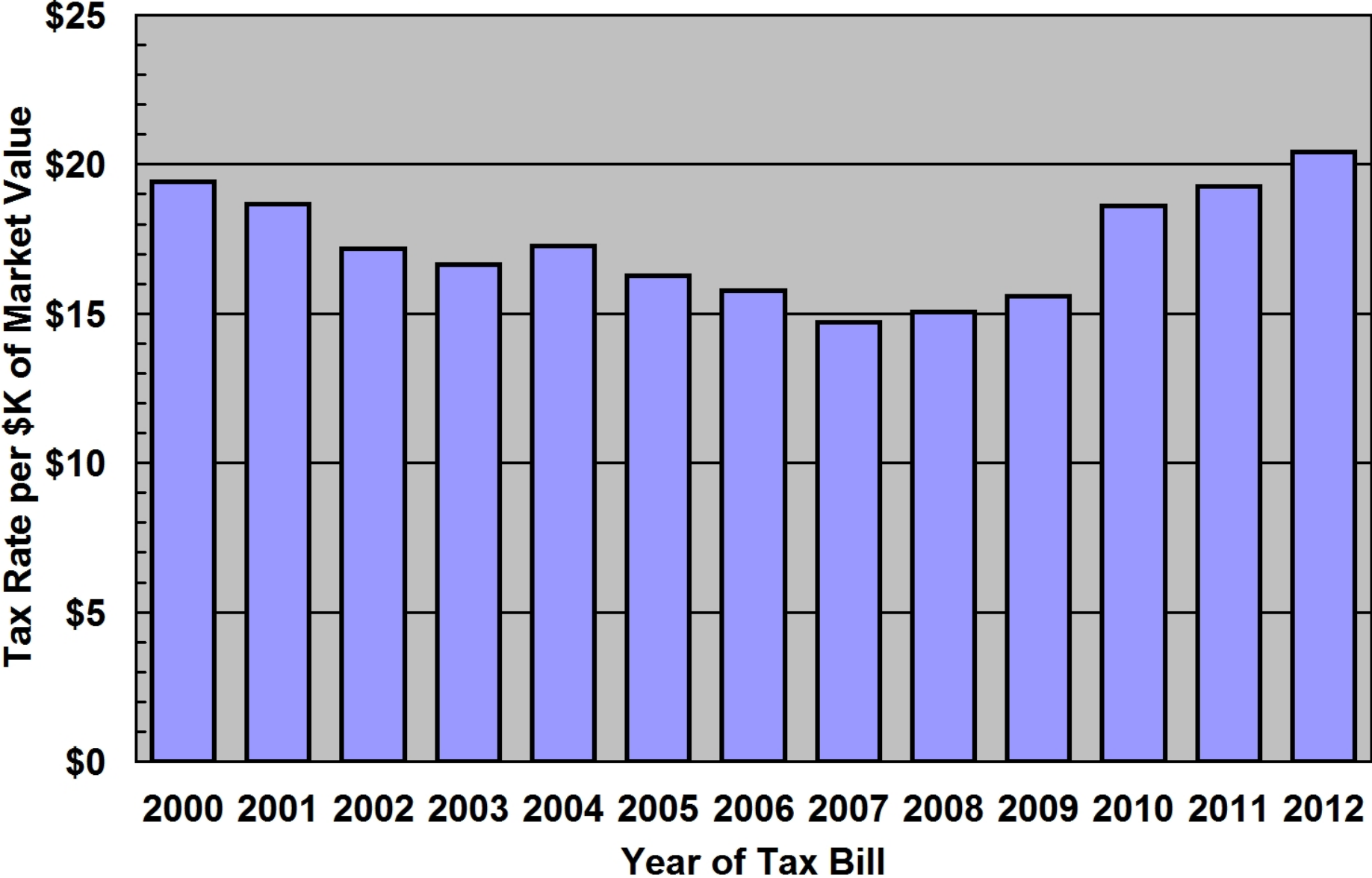
Hyde Park School District Tax Levy



Hyde Park School District Tax Levy Increase



Hyde Park School District Tax Rate



Hyde Park School District Tax Rate Increase

