

# Arlington School District Aggregate Property Tax

Copyright © 2011 *Bill Rubin*

March 5, 2011

This document presents aggregate property tax information for the Arlington Central School District, Dutchess County, New York, in both table and chart form.

Arlington School District (Aggregate)						
Year of Tax Bill	Taxable Market Value		Tax Levy		Tax Rate	
	Market Value	Percent Increase	Tax Levy	Percent Increase	Tax Rate per \$K of Market Value	Percent Increase
2000	\$2,899,053,378		\$54,142,601		\$18.68	
2001	\$3,304,969,758	14.0%	\$59,432,978	9.77%	\$17.98	-3.7%
2002	\$4,177,746,947	26.4%	\$65,324,590	9.91%	\$15.64	-13.0%
2003	\$4,510,757,834	8.0%	\$73,261,651	12.15%	\$16.24	3.9%
2004	\$5,016,211,049	11.2%	\$82,668,011	12.84%	\$16.48	1.5%
2005	\$5,804,218,269	15.7%	\$91,332,457	10.48%	\$15.74	-4.5%
2006	\$6,581,231,534	13.4%	\$98,753,911	8.13%	\$15.01	-4.6%
2007	\$7,519,249,377	14.3%	\$102,681,257	3.98%	\$13.66	-9.0%
2008	\$7,074,421,733	-5.9%	\$107,268,891	4.47%	\$15.16	11.0%
2009	\$6,644,287,838	-6.1%	\$112,852,427	5.21%	\$16.98	12.0%
2010	\$6,128,178,886	-7.8%	\$121,093,531	7.30%	\$19.76	16.3%
2011	not available		\$126,500,856	4.47%		

The columns of the above table are obtained as follows:

- **Market Value:** Assessed values in Reference 1 divided by the corresponding equalization rates in Reference 2. Results aggregated for the 2 property classes and portions of 9 Towns comprising the Arlington School District.
- **Tax Levy:** Tax levies in Reference 1, aggregated for the 2 property classes and portions of 9 Towns. For 2011, value is from Reference 3.
- **Tax Rate:** Corresponding Tax Levy divided by Market Value.
- **Percent Increase:** Calculated from successive year data in previous column.

All quantities are calculated to 16 significant figures. Rounding is only for convenience of the above display.

## **Interpretation of Arlington Tax Rates**

The tax rates in this document are a good measure of how steeply the Arlington School District has been taxing its property owners *in the aggregate*. This measure is useful for comparing District taxes among years, as well as for comparing the general steepness of Arlington's property taxes with those of other school districts.

It is important to understand that *the tax rates in this document should not be used to determine how steeply an individual taxpayer in the Arlington School District is taxed*. In the Arlington School District, different taxpayers are taxed at different rates. These different rates arise for two reasons:

1. Arlington has chosen to use the homestead tax option, which means that homestead properties (generally houses of residents) are taxed at a substantially lower rate than non-homestead properties (generally commercial properties).
2. Arlington taxes the 9 municipal segments (portions of 9 different Towns) in the Arlington School District at different rates, according to a provision of New York State's homestead tax law.

## **Charts**

The charts on the following 6 pages depict each of the 6 columns of the above table as a function of year of tax bill.

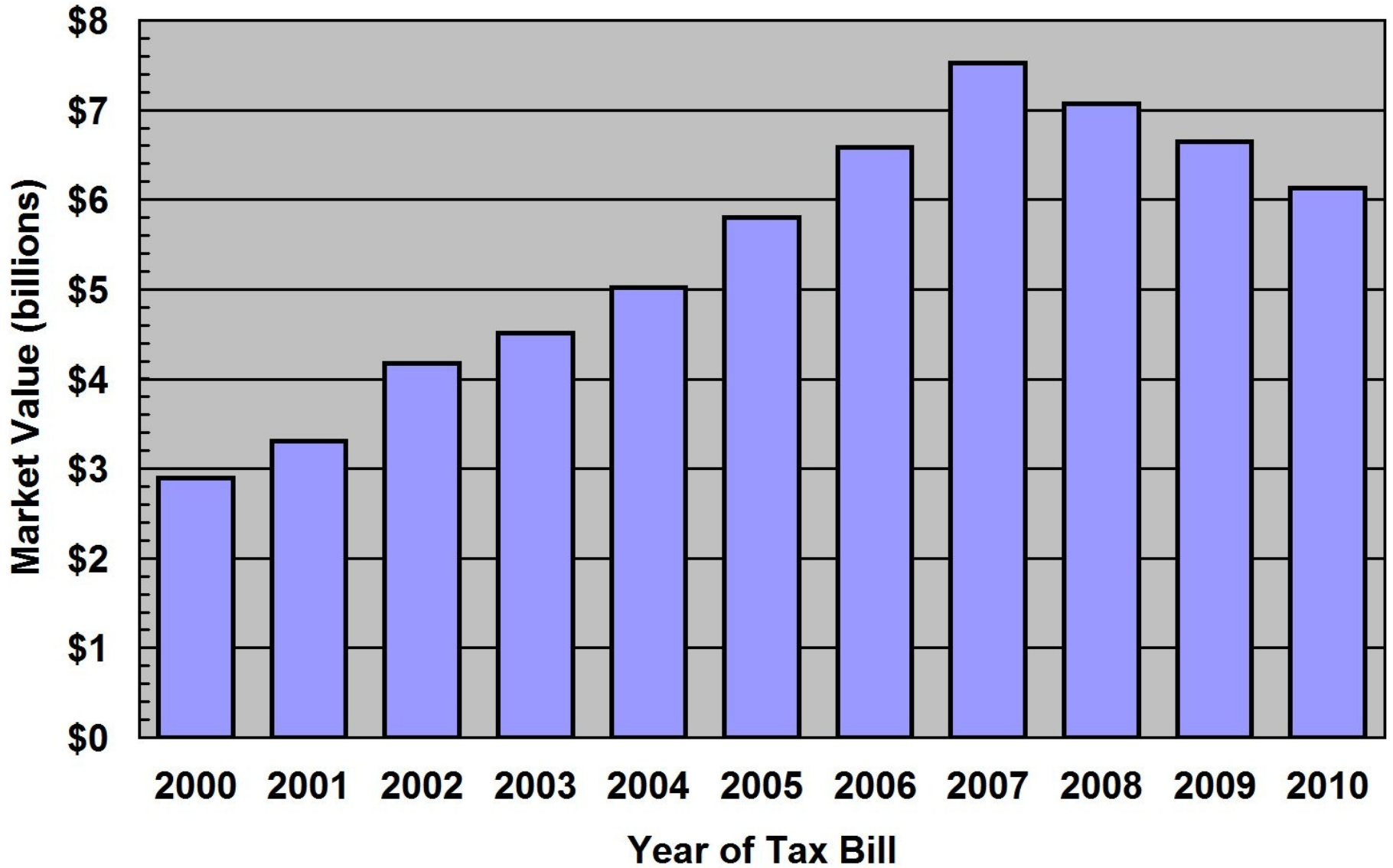
## **Acknowledgment**

The author is grateful to Arlington School District Assistant Superintendent for Business Robin Zimmerman for confirming the correctness of my 2005-2010 tax levy data, and for many helpful discussions.

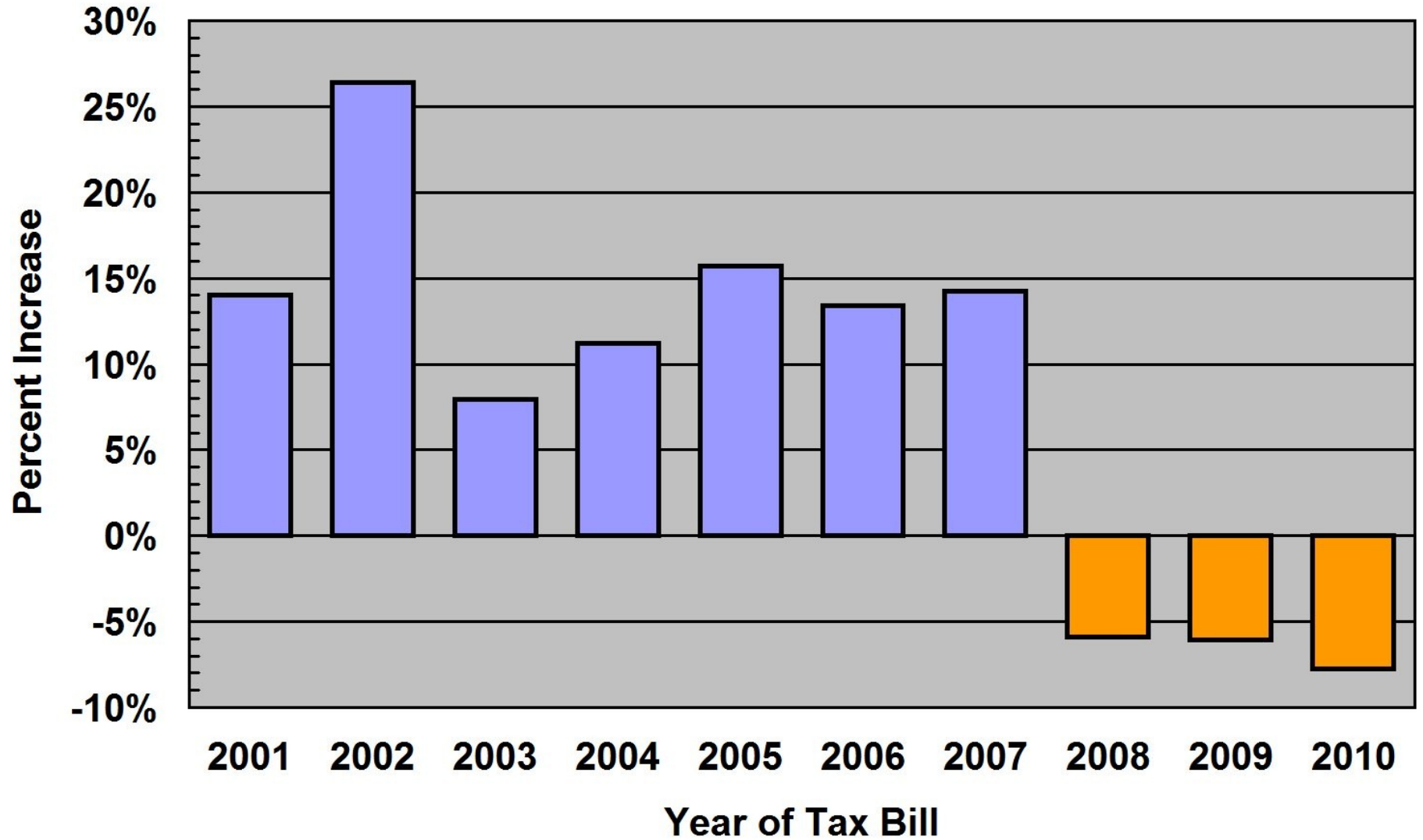
## **References**

- [1] *2001 County, Town School & Village Tax Rates*, pamphlet published by the Dutchess County Real Property Tax Service Agency, 22 Market St., Poughkeepsie, NY 12601, and similar pamphlets for succeeding years up through 2011. These pamphlets are also available at their [website](#).
- [2] [Equalization Rate by County](#), data published on the web by the New York State Department of Taxation and Finance Office of Real Property Tax Services.
- [3] 2011 proposed tax levy is from Arlington Central School [2011-2012 Budget Draft 2](#), February 15, 2011, page 38.

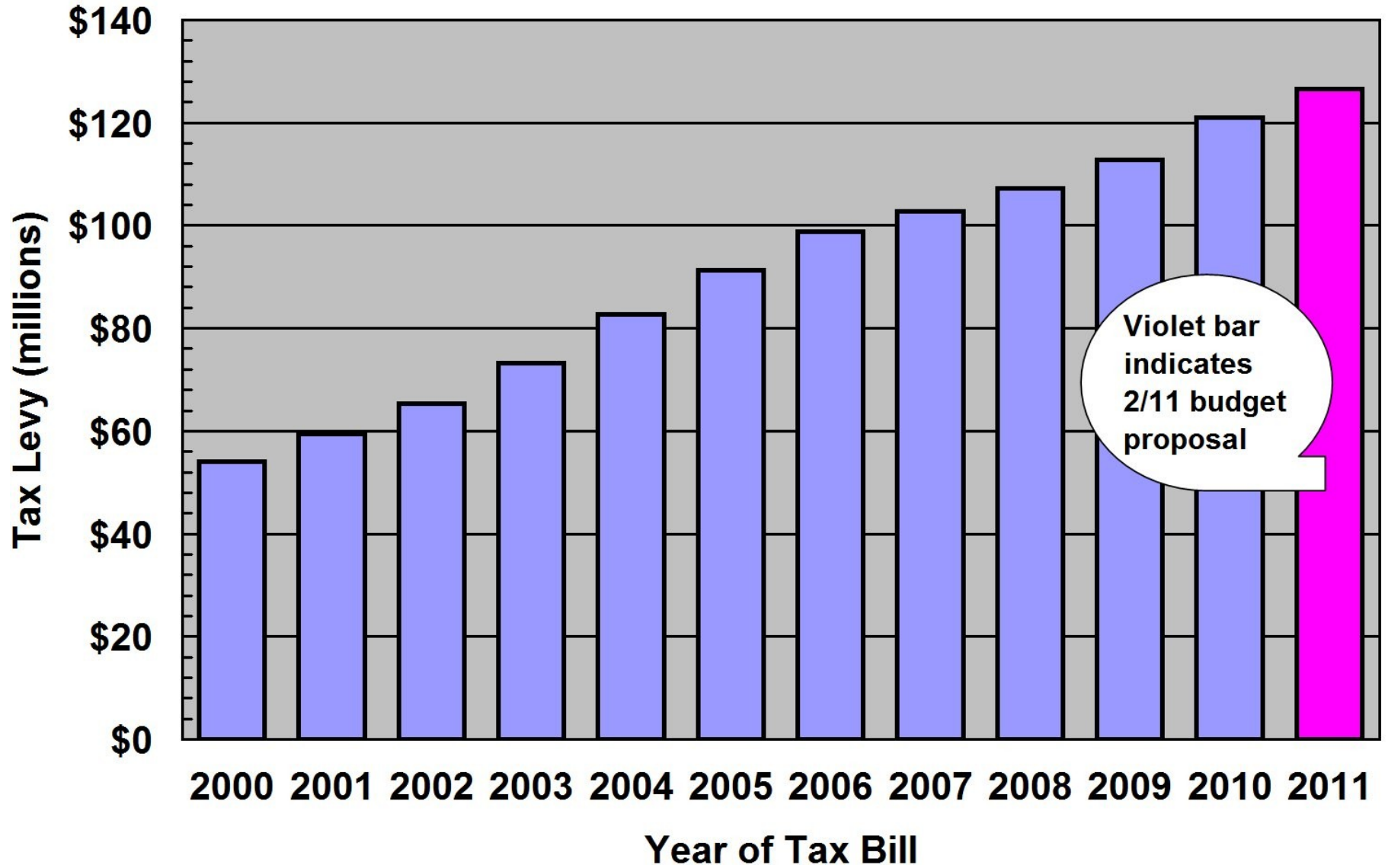
### Arlington School District (Aggregate) Taxable Market Value



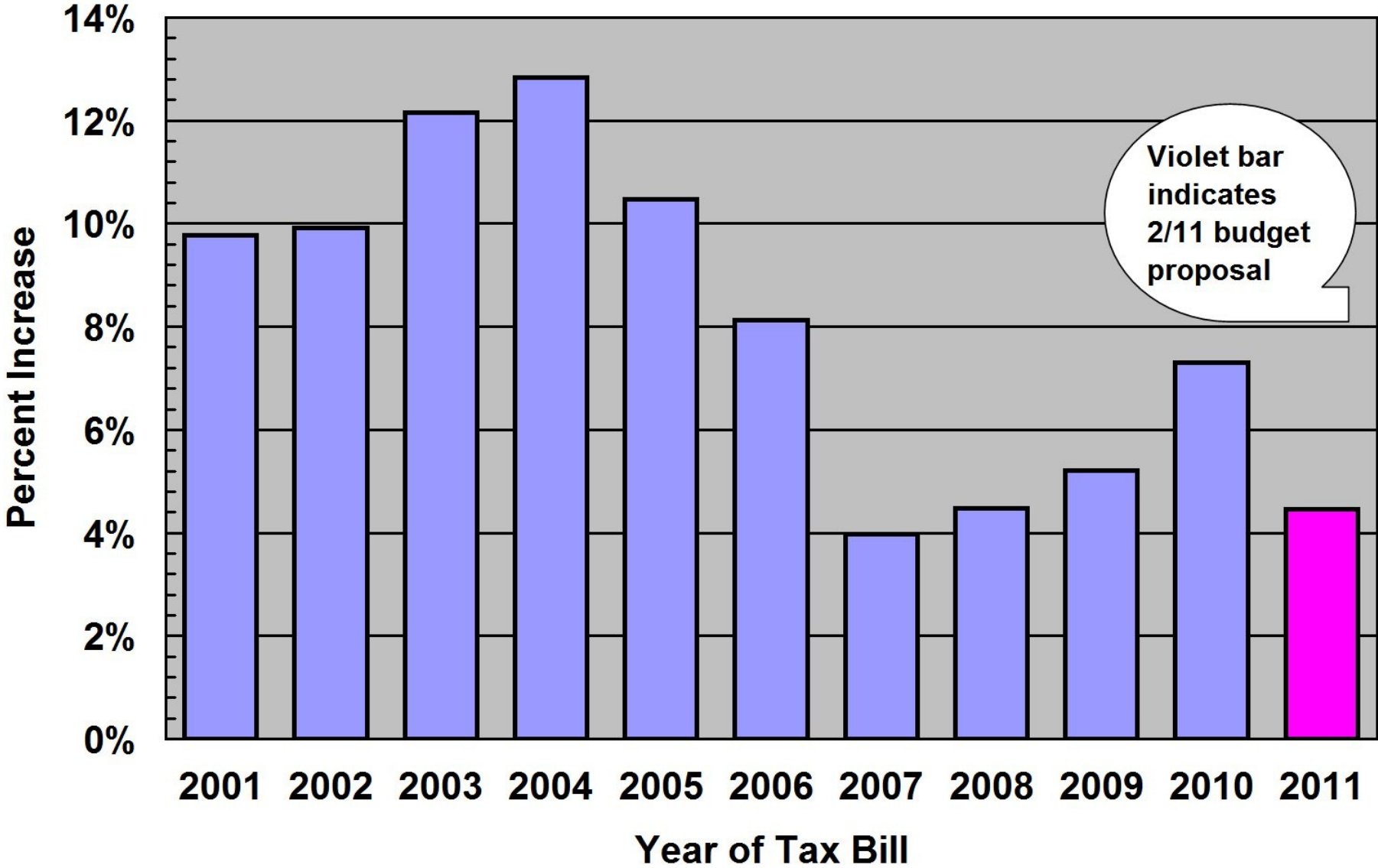
## Arlington School District (Aggregate) Taxable Market Value Increase



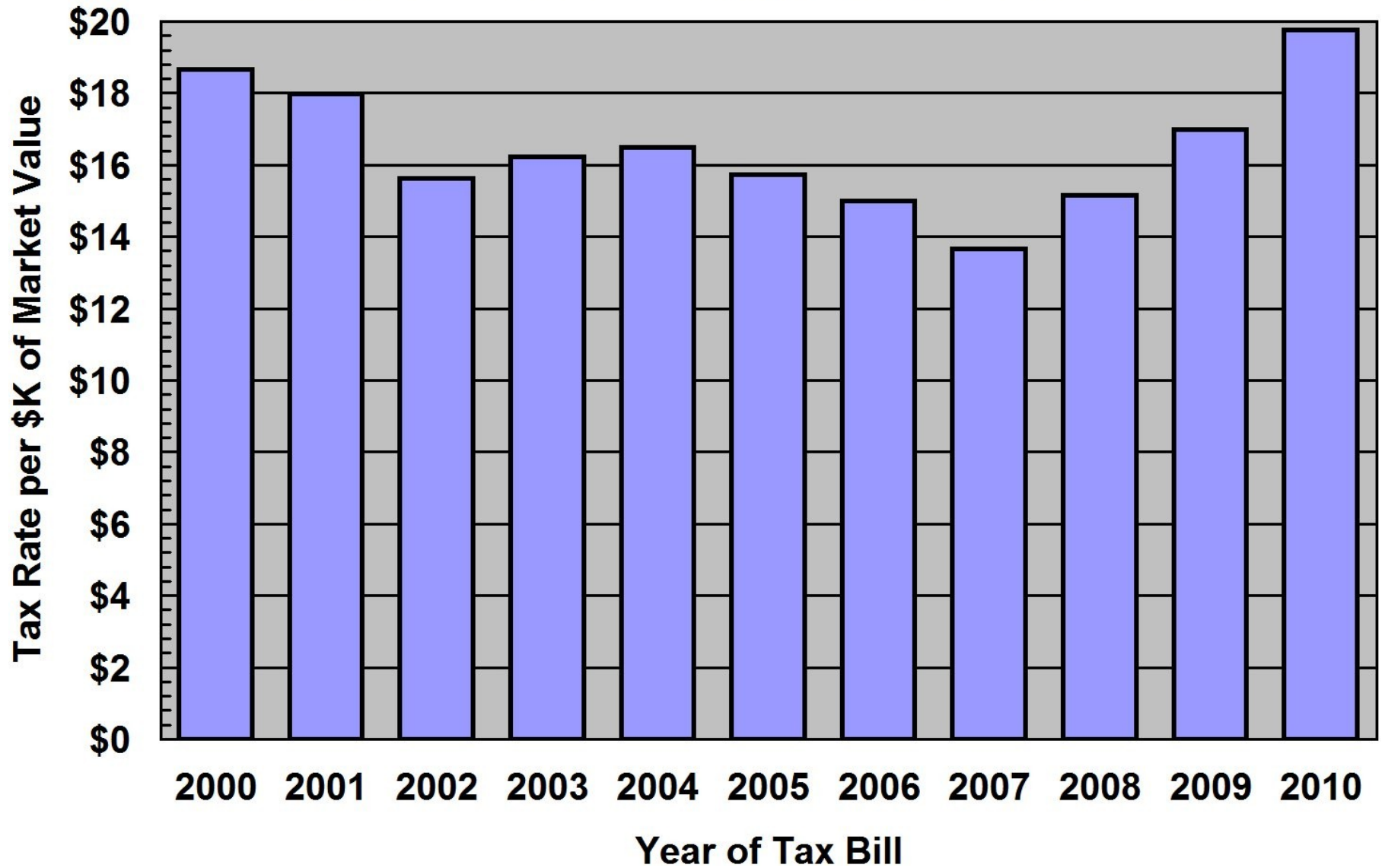
# Arlington School District Aggregate Tax Levy



# Arlington School District Aggregate Tax Levy Increase



### Arlington School District (Aggregate) Tax Rate



## Arlington School District (Aggregate) Tax Rate Increase

