

# Town of Pleasant Valley Property Tax Rate History

Copyright © 2012 *Bill Rubin*

January 29, 2012

This document presents historical property tax rate information for the Town of Pleasant Valley, Dutchess County, New York, in both table and chart form. This information is from the taxpayer's viewpoint, which differs slightly from the budget viewpoint. For the differences between these viewpoints, see Reference [2].

Town of Pleasant Valley						
Year of Tax Bill	Taxable Market Value		Tax Levy		Tax Rate	
	Market Value	Percent Increase	Tax Levy	Percent Increase	Tax Rate per \$K of Market Value	Percent Increase
2001	\$510,687,715		\$1,357,766		\$2.66	
2002	\$571,583,906	11.9%	\$1,433,524	5.6%	\$2.51	-5.7%
2003	\$722,531,600	26.4%	\$1,552,514	8.3%	\$2.15	-14.3%
2004	\$761,003,851	5.3%	\$1,633,375	5.2%	\$2.15	-0.1%
2005	\$850,301,691	11.7%	\$1,740,217	6.5%	\$2.05	-4.6%
2006	\$1,010,765,376	18.9%	\$1,711,853	-1.6%	\$1.69	-17.2%
2007	\$1,147,606,302	13.5%	\$1,805,939	5.5%	\$1.57	-7.1%
2008	\$1,216,116,927	6.0%	\$1,958,149	8.4%	\$1.61	2.3%
2009	\$1,218,007,463	0.2%	\$2,048,662	4.6%	\$1.68	4.5%
2010	\$1,127,005,969	-7.5%	\$2,222,180	8.5%	\$1.97	17.2%
2011	\$988,830,331	-12.3%	\$2,422,744	9.0%	\$2.45	24.3%
2012	\$1,046,277,416	5.8%	\$2,502,563	3.3%	\$2.39	-2.4%

The columns of the above table are obtained as follows:

- **Market Value:** Assessed value divided by the corresponding equalization rate, both from Reference 1.
- **Tax Levy:** From Reference 1.
- **Tax Rate:** Corresponding Tax Levy divided by Market Value.
- **Percent Increase:** Calculated from successive year data in previous column.

All quantities are calculated to 16 significant figures. Rounding is only for convenience of the above display.

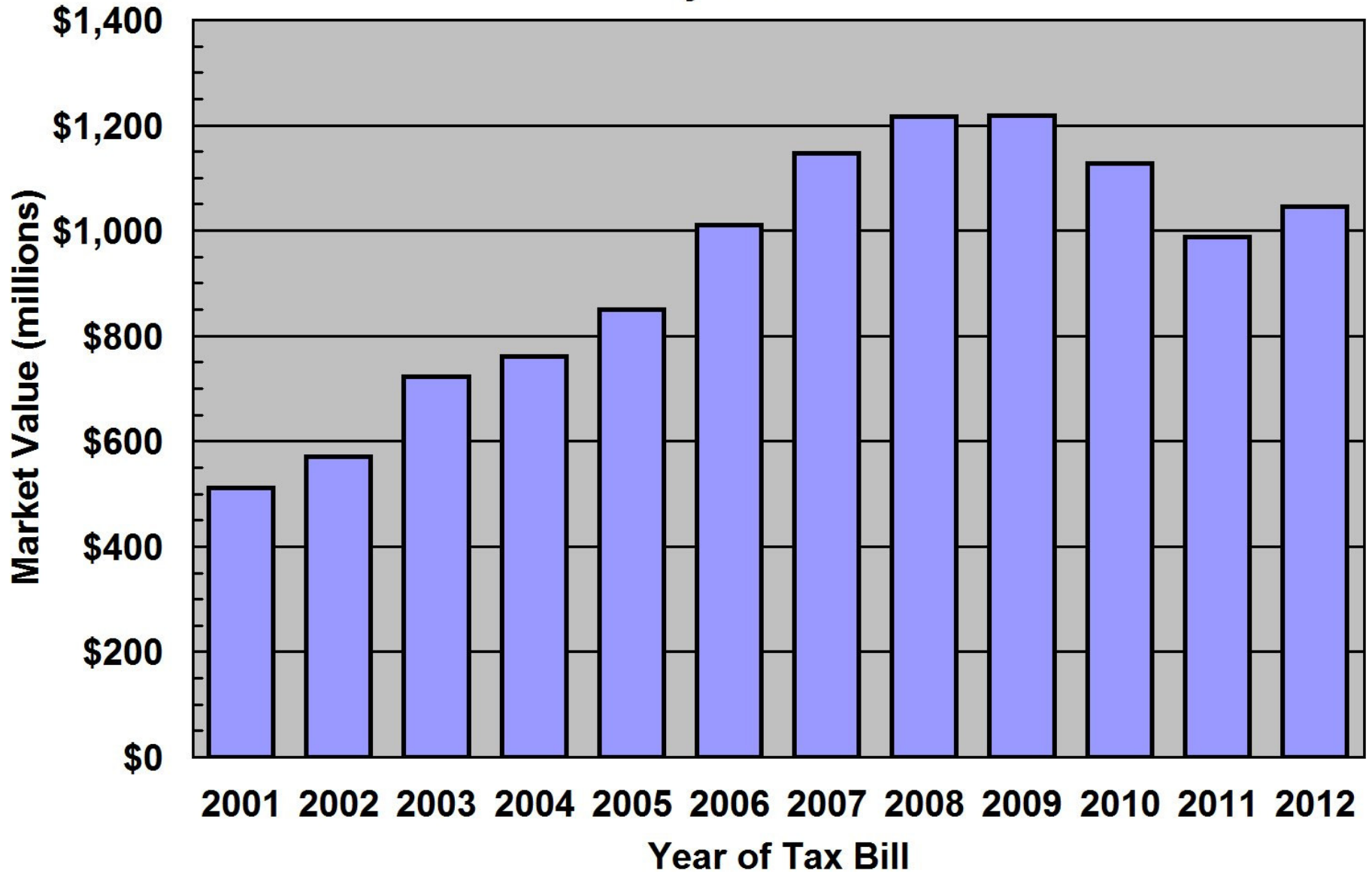
## Charts

The charts on the following 6 pages depict each of the 6 columns of the above table as a function of year of property tax bill.

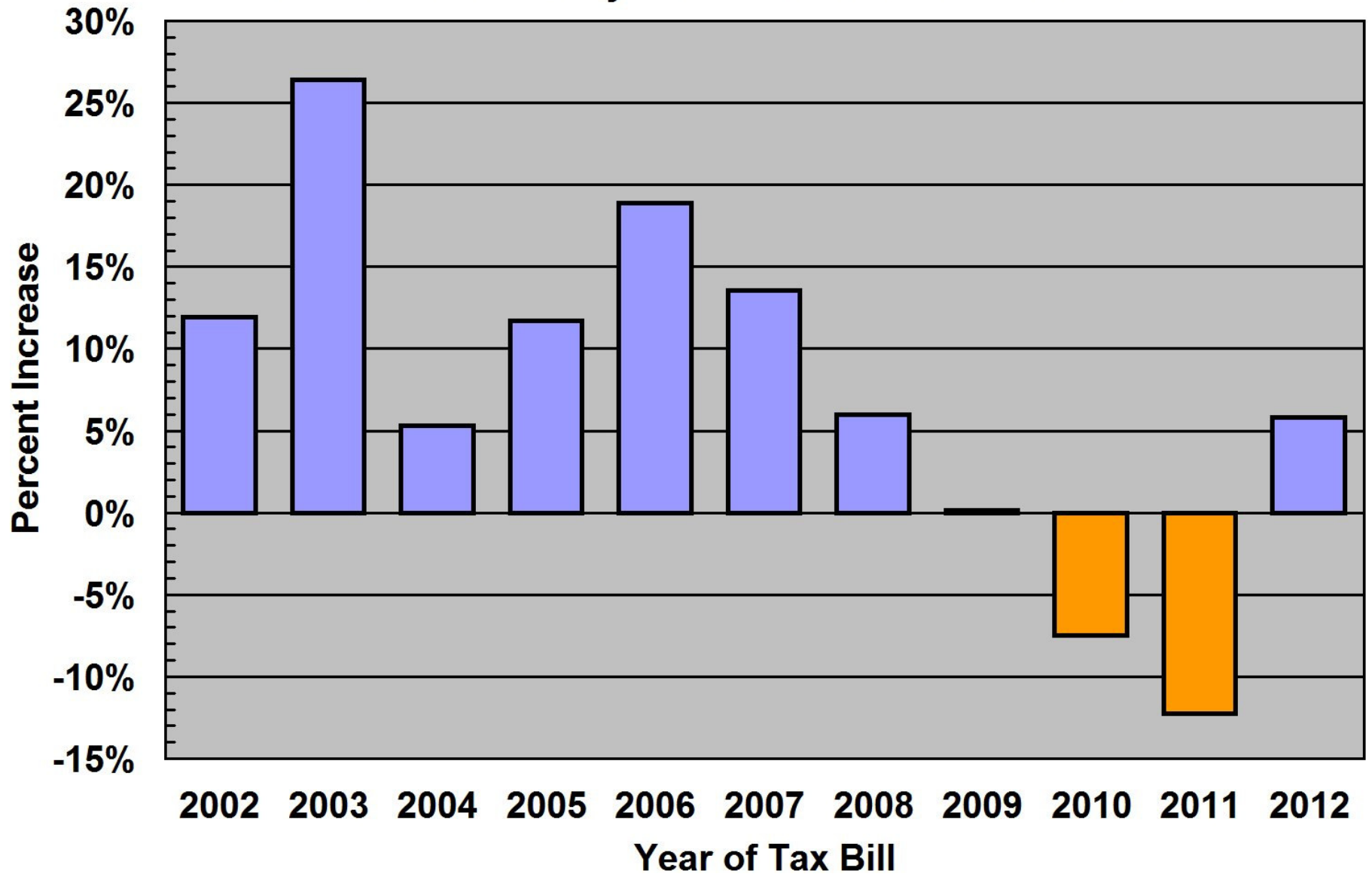
## References

- [1] *2001 County, Town School & Village Tax Rates*, pamphlet published by the Dutchess County Real Property Tax Service Agency, 22 Market St., Poughkeepsie, NY 12601, and similar pamphlets for succeeding years up through 2012. These pamphlets are also available at their [website](#).
- [2] [Tax Rate Viewpoints – Taxpayer Versus Budget](#) blog post by Bill Rubin, September 26, 2011, at blog [Property Tax in Dutchess County](#).

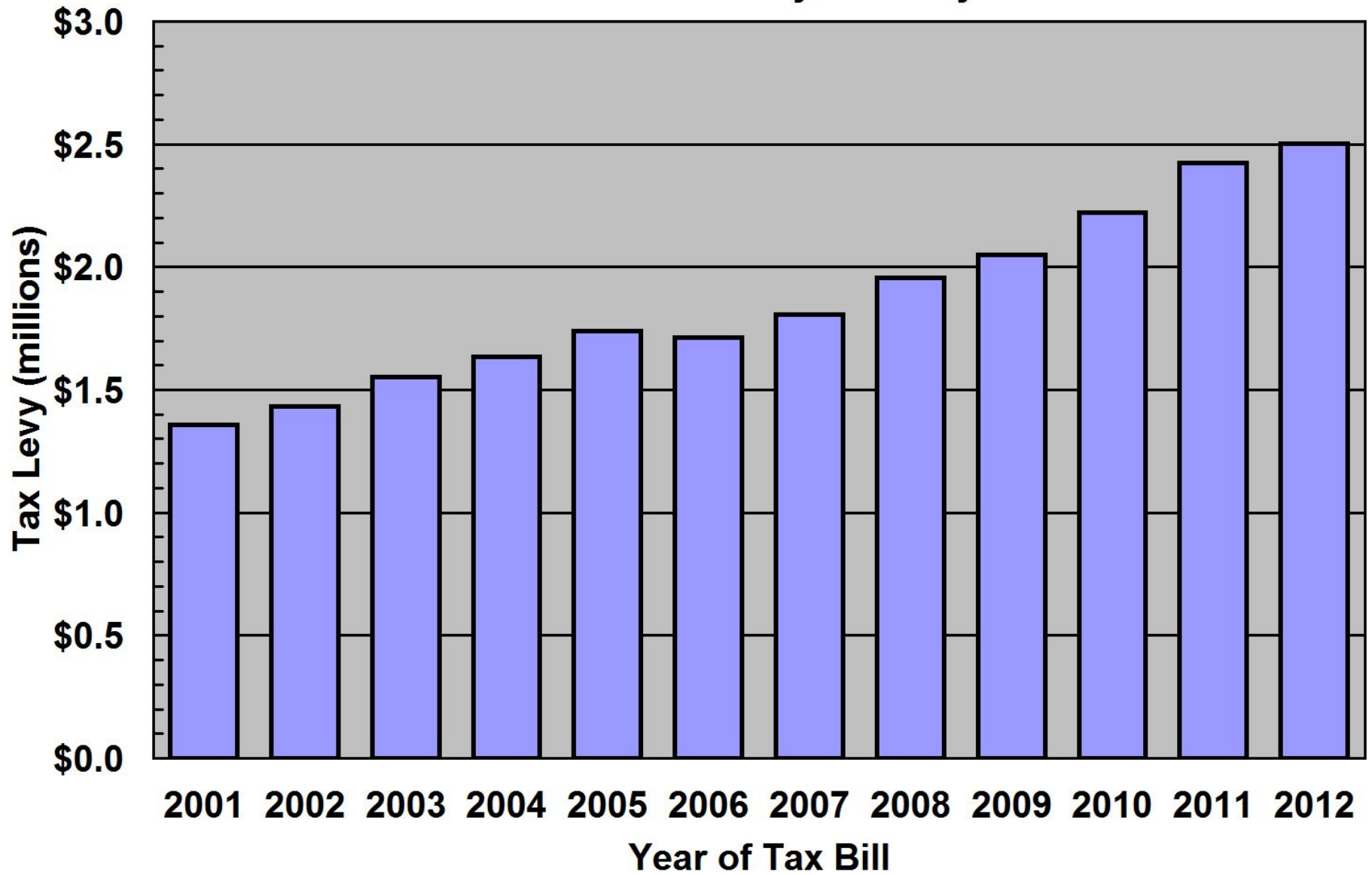
### Town of Pleasant Valley Taxable Market Value



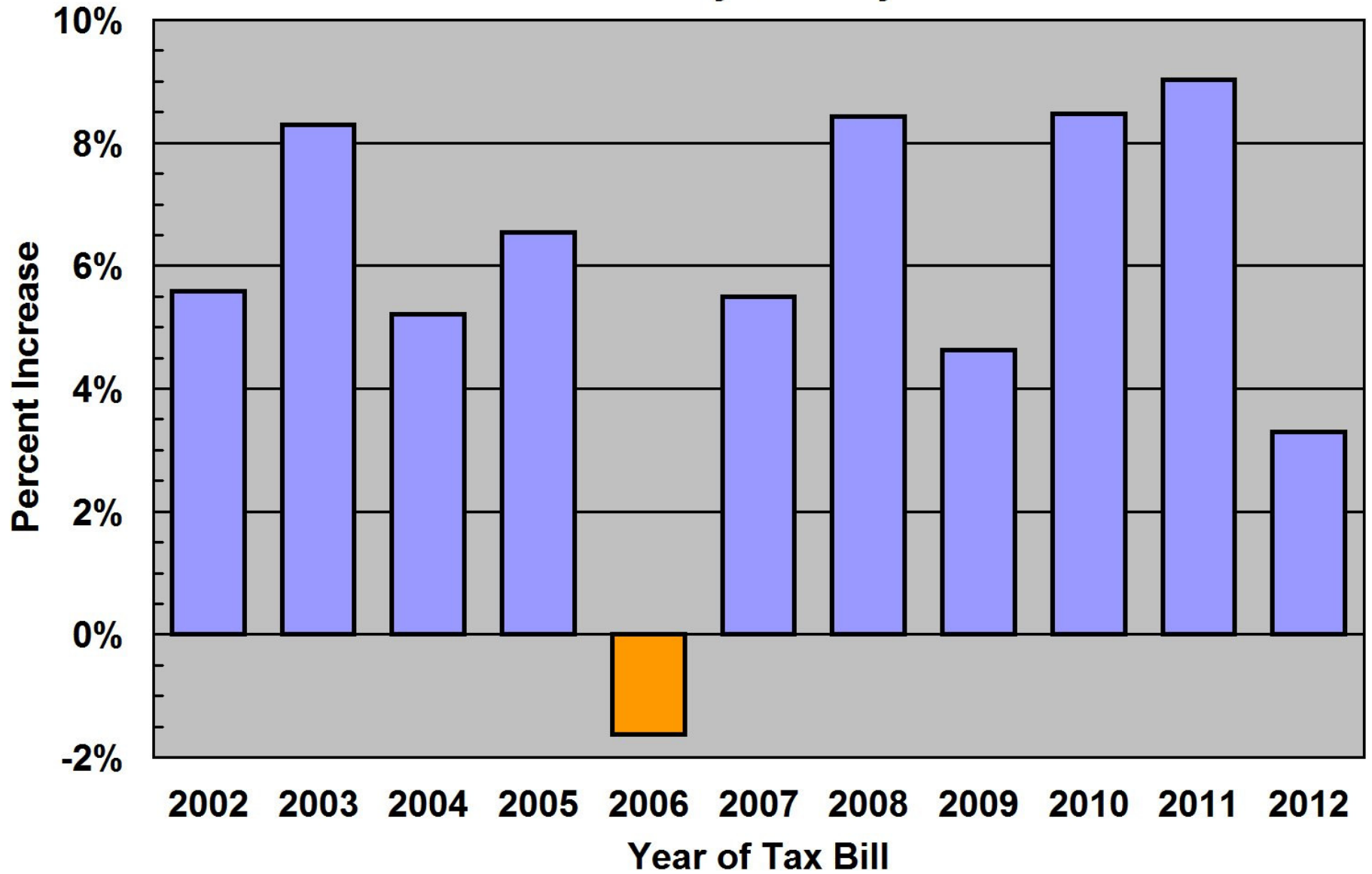
## Town of Pleasant Valley Taxable Market Value Increase



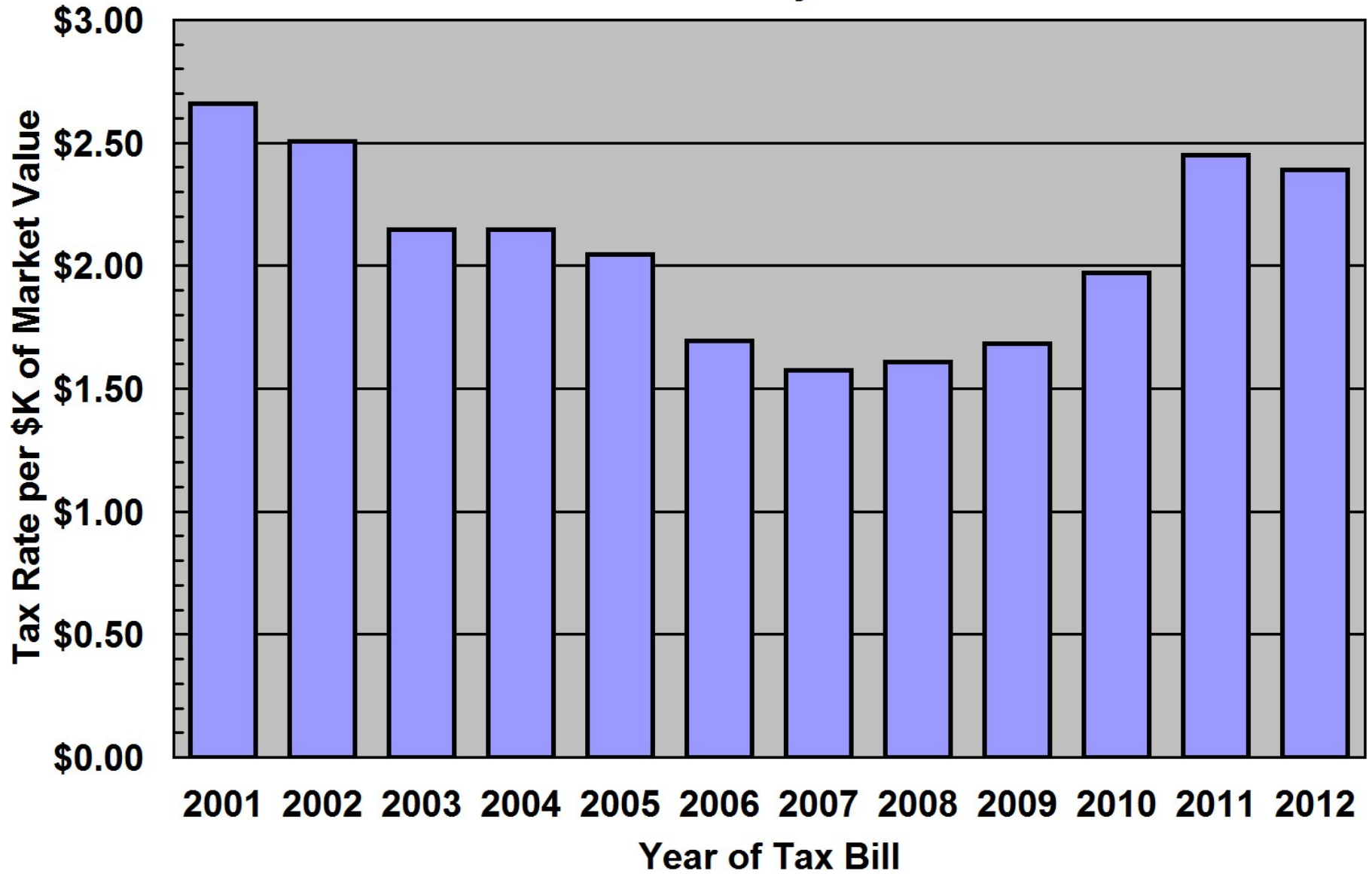
## Town of Pleasant Valley Tax Levy



## Town of Pleasant Valley Tax Levy Increase



### Town of Pleasant Valley Tax Rate



## Town of Pleasant Valley Tax Rate Increase

