

# Fairview Fire District Property Tax Data

Copyright © 2011 *Bill Rubin*

September 27, 2011

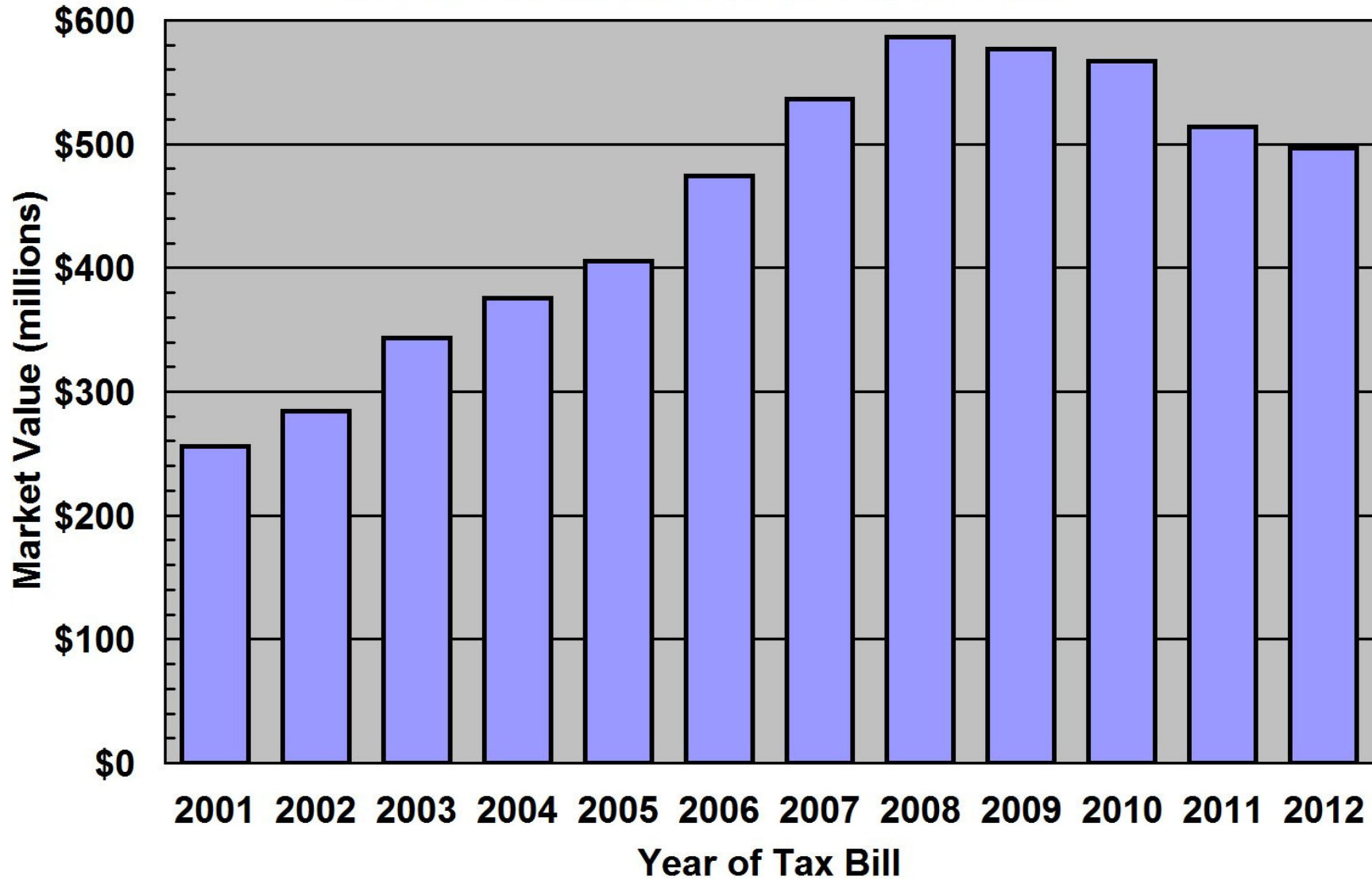
This document displays the taxable market value, tax levy, and true value tax rate for the Fairview Fire District in Dutchess County, New York, for each year since 2001. It also shows the year-to-year changes in each of these parameters. The data in table form:

Fairview Fire District						
Year of Tax Bill	Taxable Market Value		Tax Levy		Tax Rate	
	Market Value	Percent Increase	Tax Levy	Percent Increase	Tax Rate per \$K of Market Value	Percent Increase
2001	\$255,592,315		\$1,550,247		\$6.07	
2002	\$284,569,741	11.3%	\$1,630,218	5.2%	\$5.73	-5.5%
2003	\$343,299,935	20.6%	\$1,787,789	9.7%	\$5.21	-9.1%
2004	\$375,371,685	9.3%	\$1,948,944	9.0%	\$5.19	-0.3%
2005	\$405,586,098	8.0%	\$2,089,772	7.2%	\$5.15	-0.8%
2006	\$474,567,724	17.0%	\$2,280,596	9.1%	\$4.81	-6.7%
2007	\$536,317,328	13.0%	\$2,501,200	9.7%	\$4.66	-3.0%
2008	\$586,263,727	9.3%	\$3,024,305	20.9%	\$5.16	10.6%
2009	\$576,696,537	-1.6%	\$2,935,480	-2.9%	\$5.09	-1.3%
2010	\$567,224,135	-1.6%	\$2,860,852	-2.5%	\$5.04	-0.9%
2011	\$514,314,202	-9.3%	\$2,627,914	-8.1%	\$5.11	1.3%
2012	\$496,502,191	-3.5%	\$2,872,760	9.3%	\$5.79	13.2%

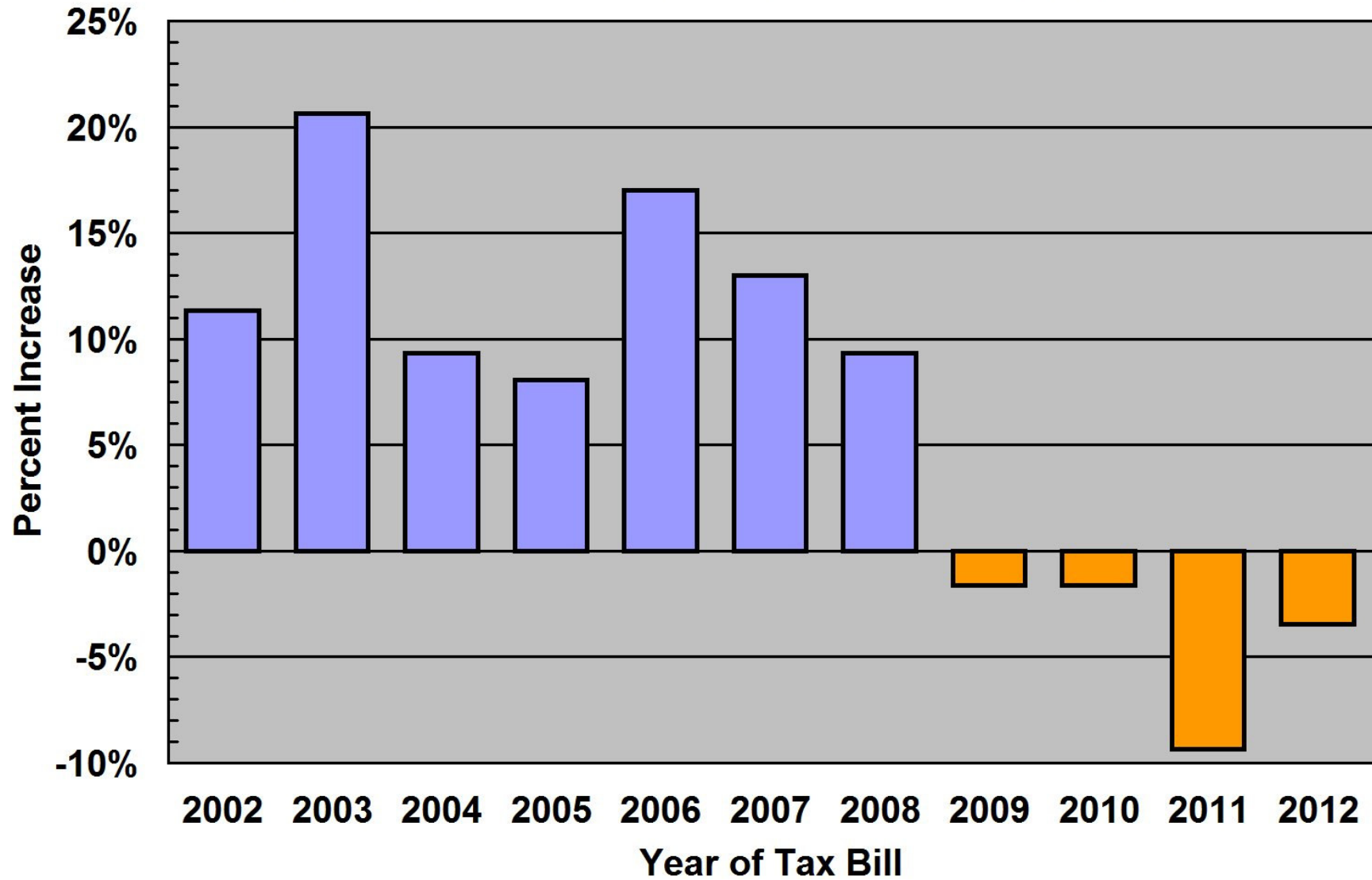
The source of the above data is the yearly [tax rate pamphlets](#) published by the [Dutchess County Real Property Tax Service Agency](#) (RPTSA), except for 2012. The 2012 data is from Fairview's proposed 2012 budget, adopted September 26, 2011.

The following pages chart each of the 6 columns of the above table for easy viewing. For 2012, the data bars for tax levy and parameters derived from it are shown in yellow to indicate that they are subject to change before the 2012 budget is finalized.

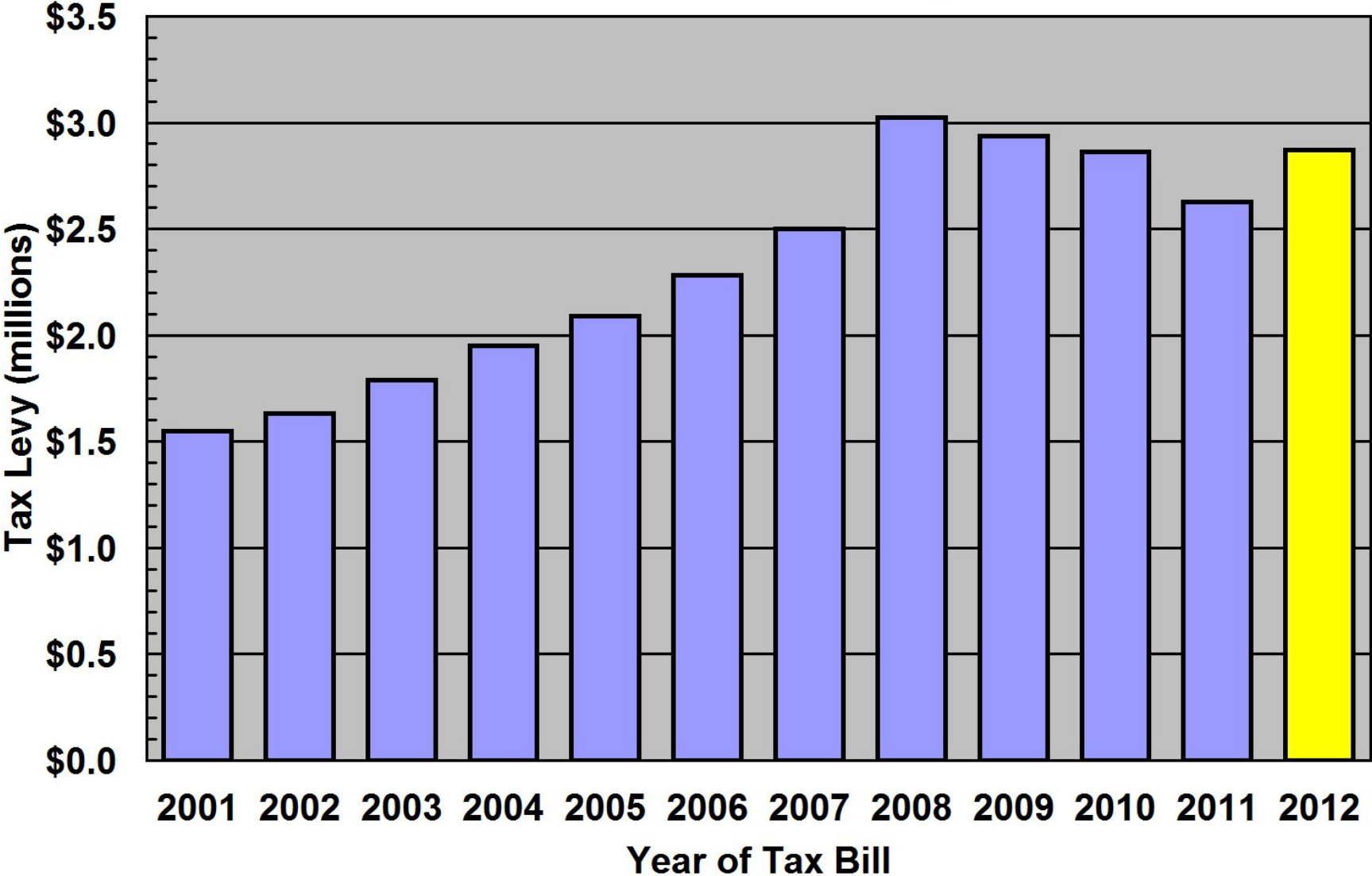
**Fairview Fire District Taxable Market Value**



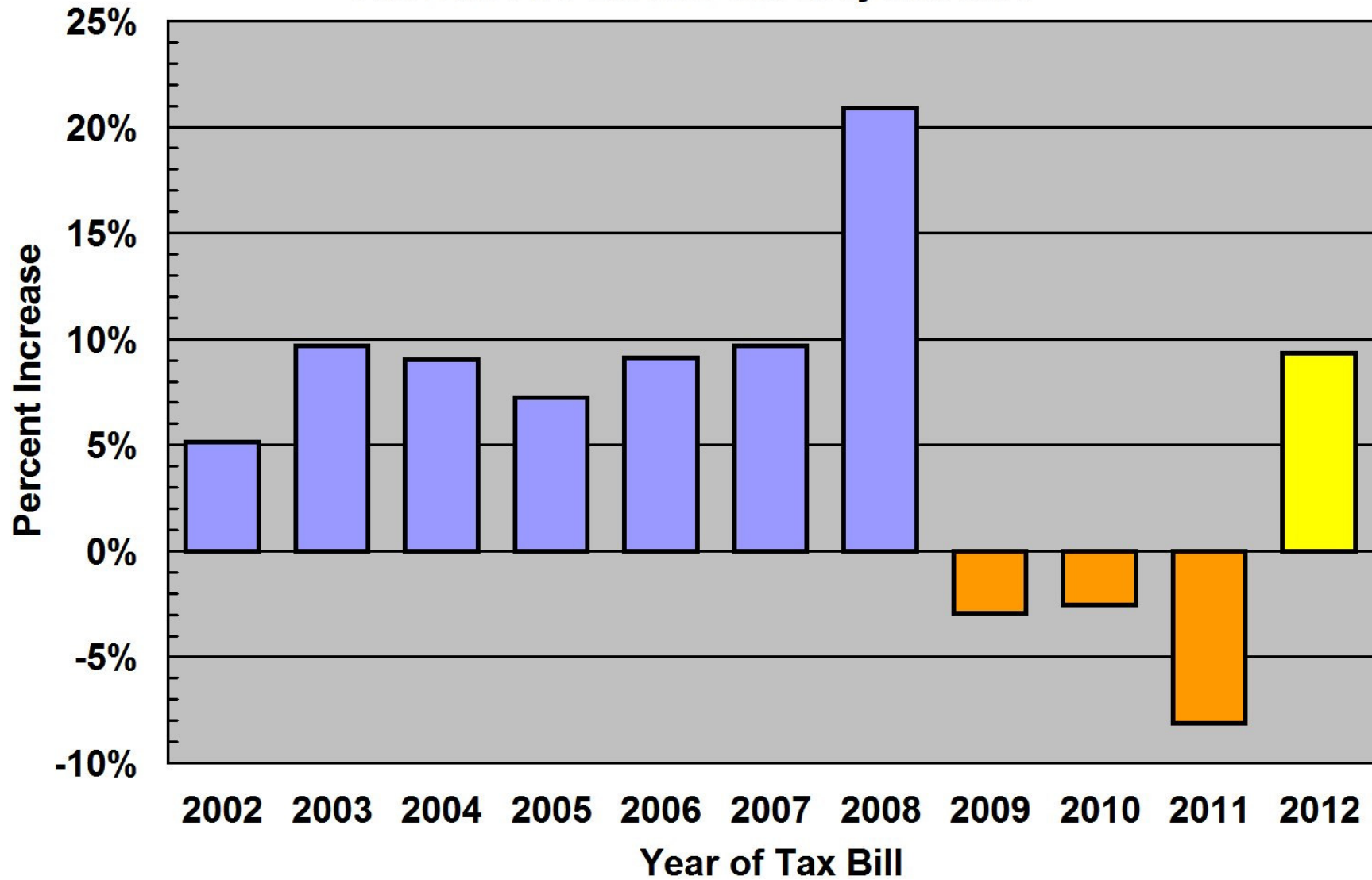
**Fairview Fire District Taxable Market Value Increase**



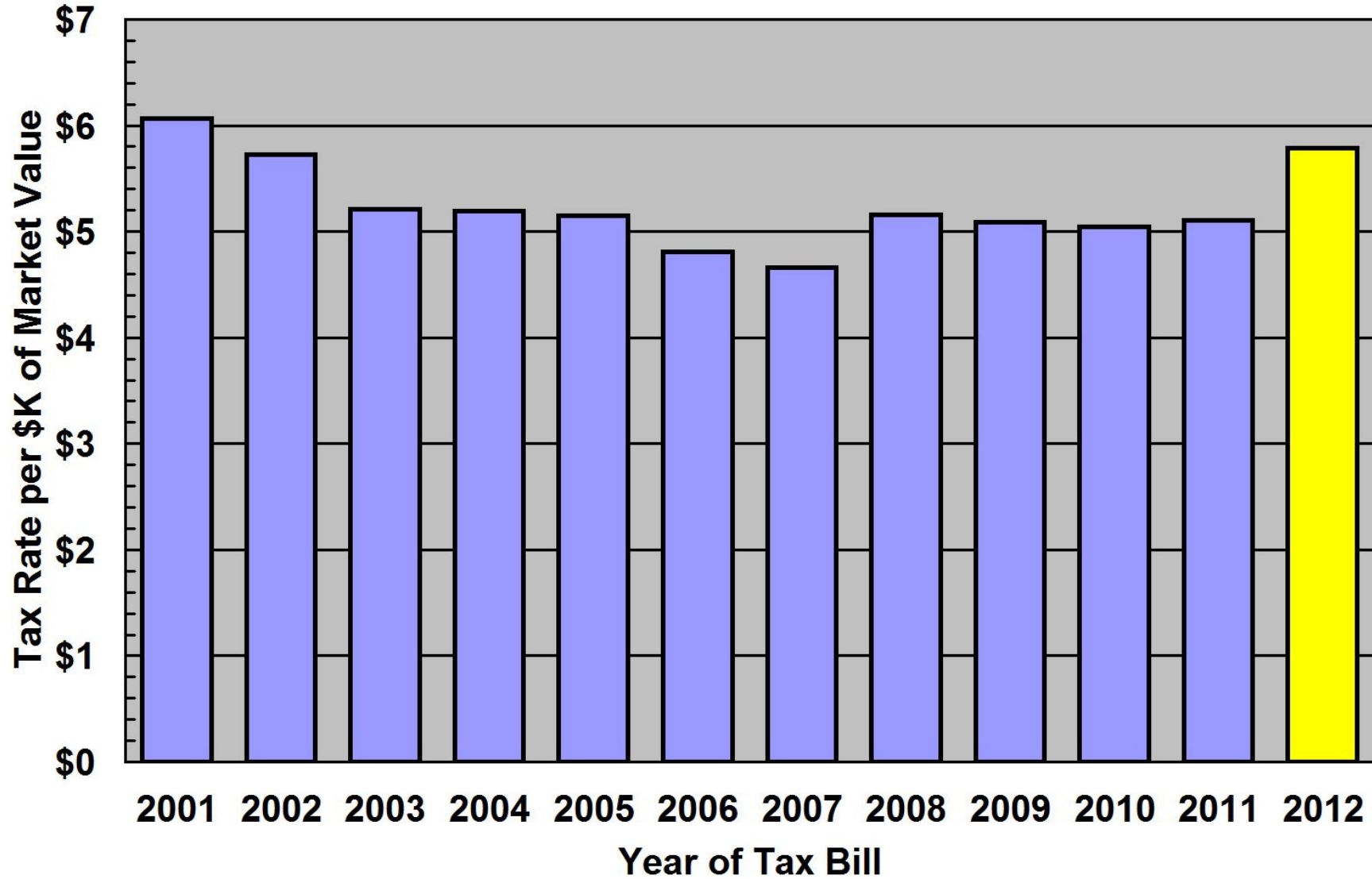
**Fairview Fire District Tax Levy**



## Fairview Fire District Tax Levy Increase



## Fairview Fire District Tax Rate



**Fairview Fire District Tax Rate Increase**

