

# Arlington Fire District Property Tax Data

Copyright © 2011 *Bill Rubin*

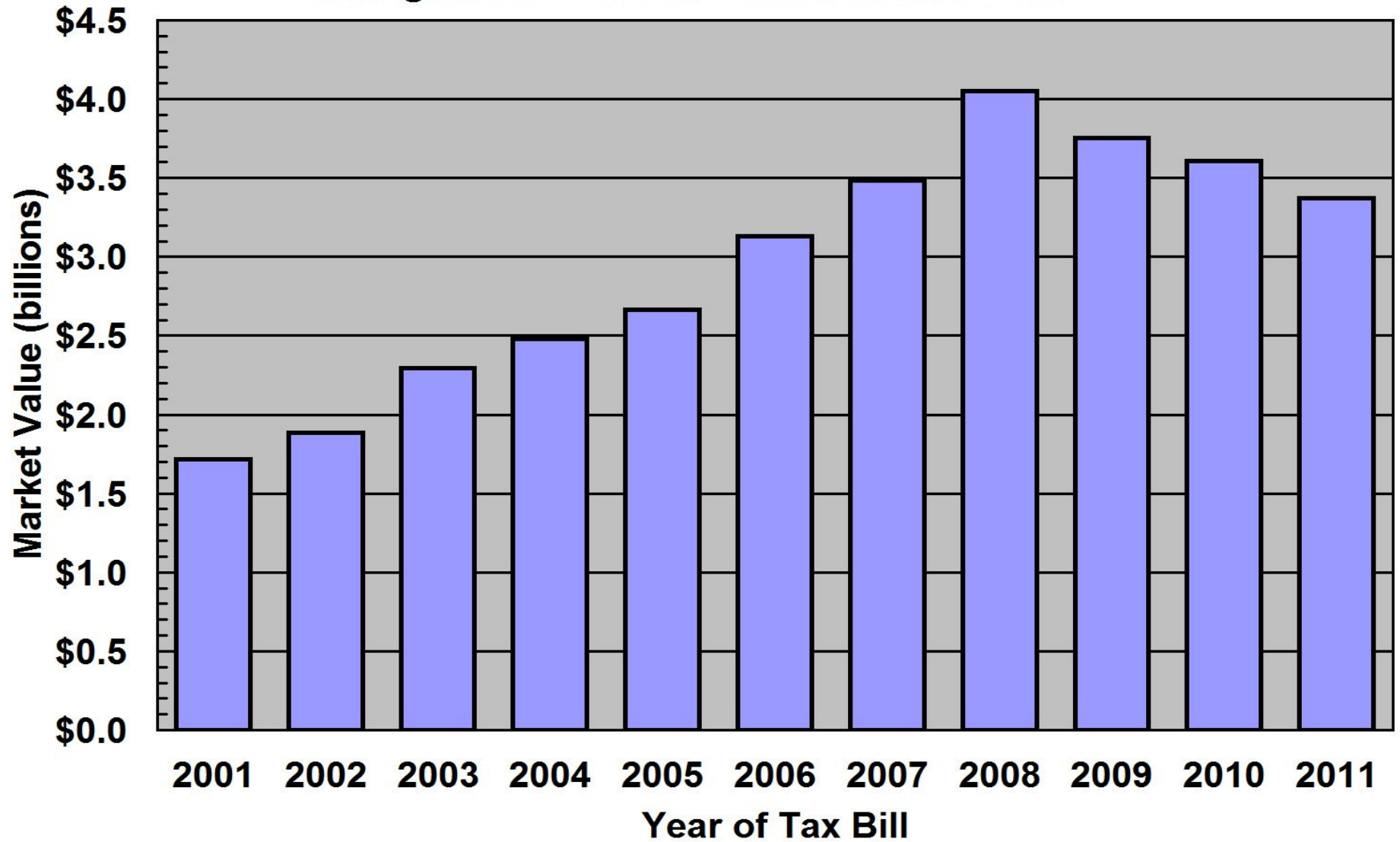
May 12, 2011

The following table shows the taxable market value, tax levy, and true value tax rate for the Arlington Fire District in Dutchess County, New York, for each year since 2001. It also shows the year-to-year changes in each of these parameters.

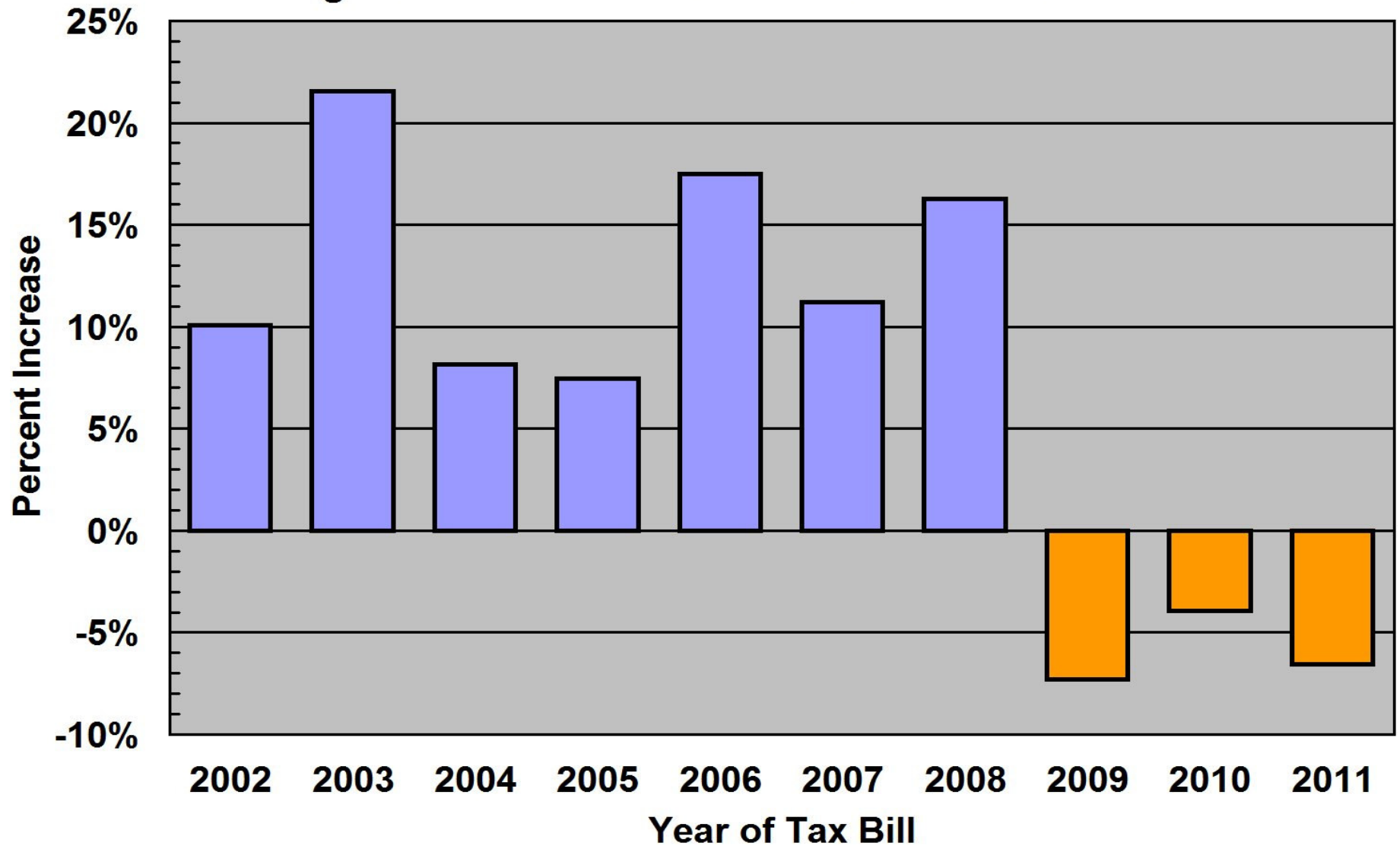
Arlington Fire District						
Year of Tax Bill	Taxable Market Value		Tax Levy		Tax Rate	
	Market Value	Percent Increase	Tax Levy	Percent Increase	Tax Rate per \$K of Market Value	Percent Increase
2001	\$1,714,614,339		\$6,177,022		\$3.60	
2002	\$1,887,300,626	10.1%	\$6,945,754	12.4%	\$3.68	2.2%
2003	\$2,294,012,847	21.5%	\$7,654,583	10.2%	\$3.34	-9.3%
2004	\$2,481,036,568	8.2%	\$8,400,614	9.7%	\$3.39	1.5%
2005	\$2,665,631,901	7.4%	\$9,231,315	9.9%	\$3.46	2.3%
2006	\$3,131,847,240	17.5%	\$10,045,400	8.8%	\$3.21	-7.4%
2007	\$3,482,582,238	11.2%	\$10,944,726	9.0%	\$3.14	-2.0%
2008	\$4,048,729,025	16.3%	\$12,962,599	18.4%	\$3.20	1.9%
2009	\$3,754,211,297	-7.3%	\$14,123,892	9.0%	\$3.76	17.5%
2010	\$3,605,994,801	-3.9%	\$15,190,713	7.6%	\$4.21	12.0%
2011	\$3,369,609,014	-6.6%	\$14,921,066	-1.8%	\$4.43	5.1%

The source of the above data is the [Dutchess County Real Property Tax Service Agency's](#) yearly [tax rate pamphlets](#). The taxable market value is simply the taxable assessed value multiplied by the equalization rate for the corresponding year (not shown). Thus the tax rate is the “true value” tax rate, suitable for comparisons. The following pages chart each of the 6 columns of the above table, for easy viewing.

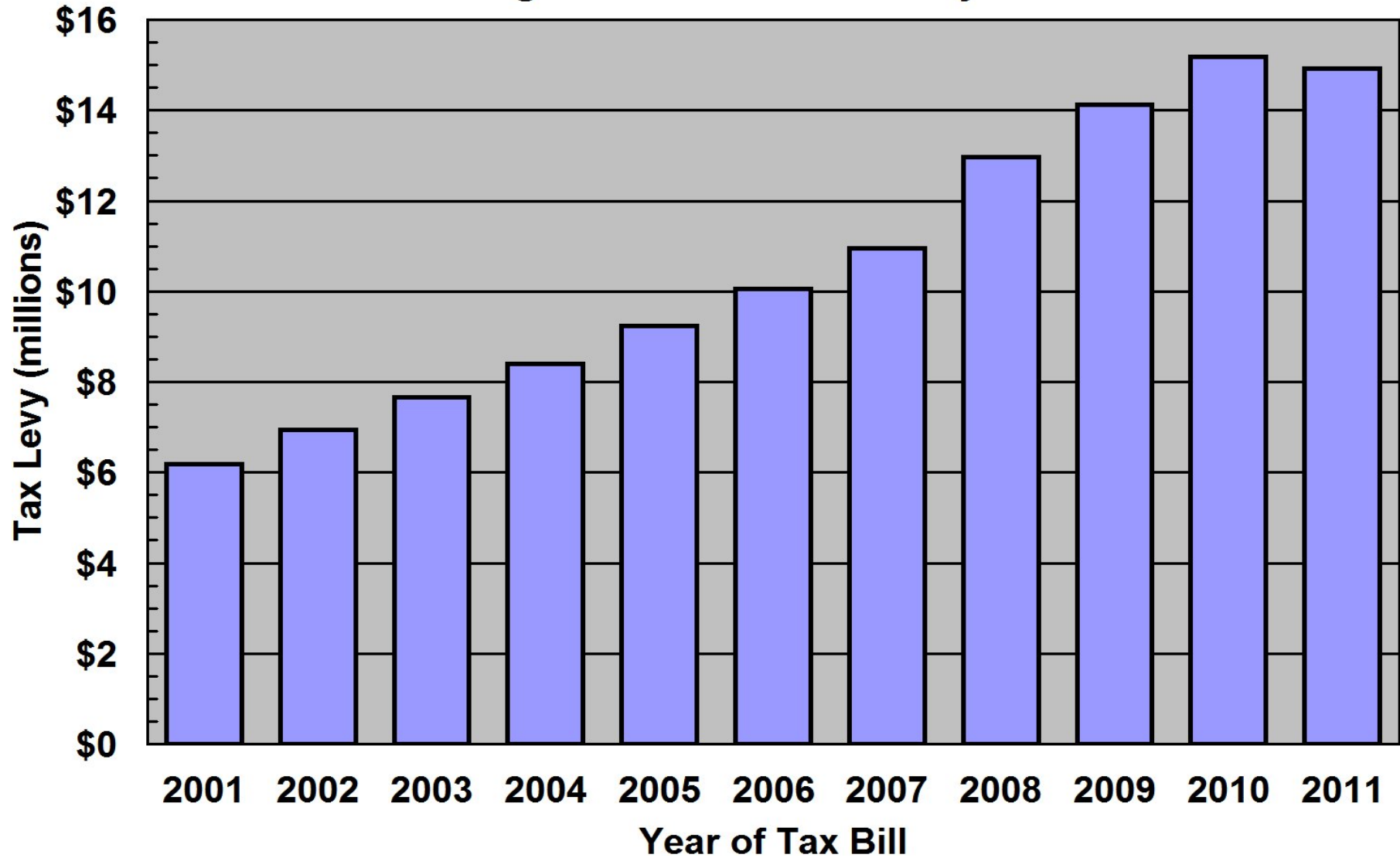
**Arlington Fire District Taxable Market Value**



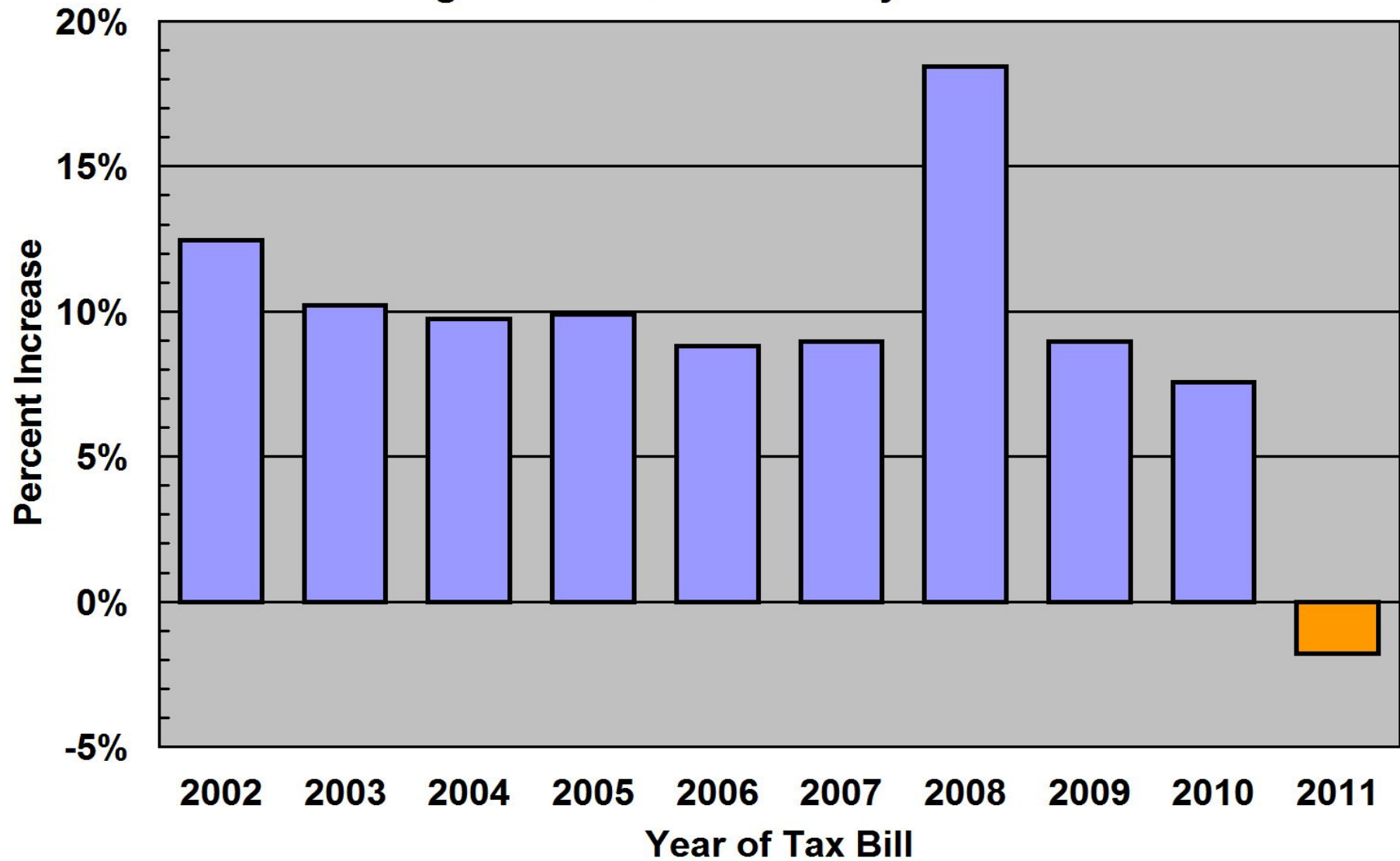
## Arlington Fire District Taxable Market Value Increase



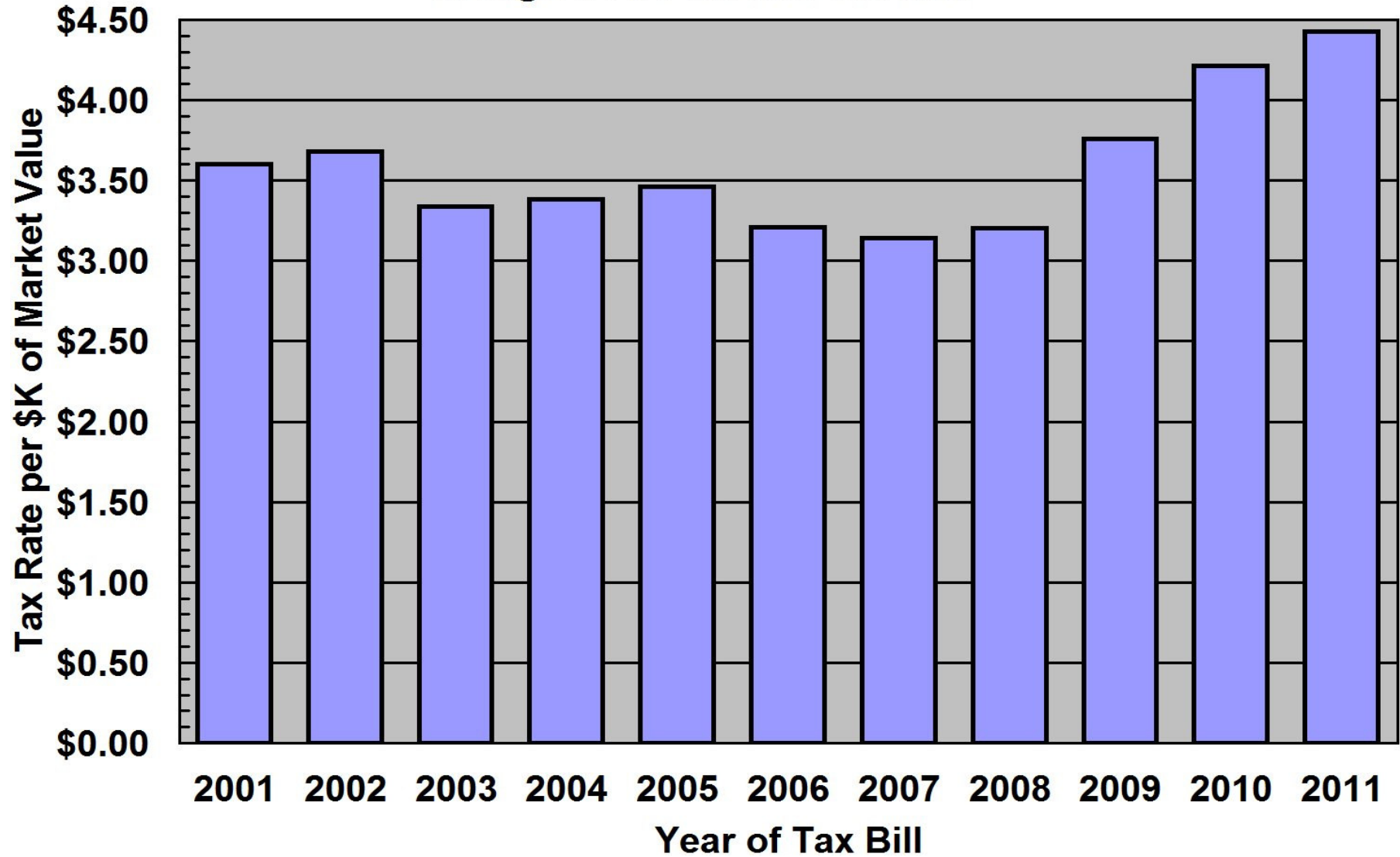
### Arlington Fire District Tax Levy



## Arlington Fire District Tax Levy Increase



### Arlington Fire District Tax Rate



## Arlington Fire District Tax Rate Increase

